

For Research Use Only

CD107a / LAMP1 Recombinant antibody

Catalog Number: 84658-5-RR



Basic Information

| | | |
|--------------------------------------|--|---|
| Catalog Number: 84658-5-RR | GenBank Accession Number: NM_005561.4 | Purification Method: Protein A purification |
| Size: 1000 µg/ml | GeneID (NCBI): 3916 | CloneNo.: 242116E8 |
| Source: Rabbit | ENSEMBL Gene ID: ENSG00000185896 | Recommended Dilutions: IF/ICC 1:200-1:800 |
| Isotype: IgG | UNIPROT ID: P11279-1 | |
| | Full Name: lysosomal-associated membrane protein 1 | |
| | Calculated MW: 45 kDa | |

Applications

| | |
|--|---|
| Tested Applications: IF/ICC, ELISA | Positive Controls: IF/ICC : HeLa cells, |
| Species Specificity: human | |

Background Information

LAMP1 (CD107a) is a heavily glycosylated membrane protein enriched in the lysosomal membrane. LAMP1 is extensively glycosylated with asparagine-linked oligosaccharides which protect it from intracellular proteolysis (PMID: 10521503). Although LAMP1 is expressed largely in the endosome-lysosomal membrane of cells, it is also found on the plasma membrane (PMID: 16168398). Elevated LAMP1 expression at the cell surface has also been detected during platelet and granulocytic cell activation, as well as in some tumor cells (PMID: 29085473). LAMP1 functions to provide selectins with carbohydrate ligands. This protein has also been shown to be a marker of degranulation on lymphocytes such as CD8+ and NK cells and may also play a role in tumor cell differentiation and metastasis (PMID: 18835598; 29085473; 9426697).

Storage

Storage:
Store at -20°C. Stable for one year after shipment.
Storage Buffer:
PBS with 0.02% sodium azide and 50% glycerol pH 7.3.
Aliquoting is unnecessary for -20°C storage

For technical support and original validation data for this product please contact:

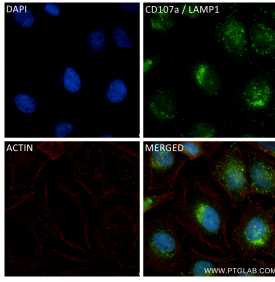
T: 4006900926

E: Proteintech-CN@ptglab.com

W: ptgcn.com

This product is exclusively available under Proteintech Group brand and is not available to purchase from any other manufacturer.

Selected Validation Data



Immunofluorescent analysis of (4% PFA) fixed HeLa cells using CD107a / LAMP1 antibody (84658-5-RR, Clone: 24Z116E8) at dilution of 1:400 and CoraLite®488-Conjugated Goat Anti-Rabbit IgG(H+L) (SA00013-2), CL594-Phalloidin (red).