

For Research Use Only

# Fc epsilon RI alpha Recombinant antibody

Catalog Number: 84662-3-RR



## Basic Information

**Catalog Number:**

84662-3-RR

**Size:**

1000 µg/ml

**Source:**

Rabbit

**Isotype:**

IgG

**GenBank Accession Number:**

NM\_001387280.1

**GeneID (NCBI):**

2205

**UNIPROT ID:**

P12319

**Full Name:**

Fc fragment of IgE, high affinity I, receptor for; alpha polypeptide

**Calculated MW:**

30kDa

**Observed MW:**

55-65 kDa

**Purification Method:**

Protein A purification

**CloneNo.:**

241848D1

**Recommended Dilutions:**

WB 1:500-1:2000

## Applications

**Tested Applications:**

WB, ELISA

**Species Specificity:**

human

**Positive Controls:**

WB : human testis tissue,

## Background Information

Fc fragment of IgE, high affinity I, receptor for, alpha polypeptide, also known as high affinity immunoglobulin epsilon receptor subunit alpha, FCER1A and FCE1A, is a single-pass type I membrane protein which contains 2 immunoglobulin-like domains. FCER1A is a subunit of the IgE receptor, which is composed of one glycosylated alpha (FCER1A), one beta (FCER1B), and two gamma (FCER1G) subunits. The high affinity IgE receptor plays a central role in allergic disease, coupling allergen and mast cells to initiate the inflammatory and immediate hypersensitivity responses that are characteristic of disorders such as hay fever and asthma. The calculated molecular weight of FCER1A is 30 kDa, the 55- to 70-kDa bands detected by this antibody are probably caused by heterogeneous glycosylation (PMID: 11344350; 12671054).

## Storage

**Storage:**

Store at -20°C. Stable for one year after shipment.

**Storage Buffer:**

PBS with 0.02% sodium azide and 50% glycerol pH 7.3.

Aliquoting is unnecessary for -20°C storage

For technical support and original validation data for this product please contact:

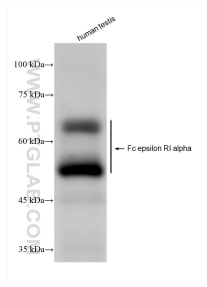
T: 4006900926

E: Proteintech-CN@ptglab.com

W: ptgcn.com

**This product is exclusively available under Proteintech Group brand and is not available to purchase from any other manufacturer.**

## Selected Validation Data



Human testis was subjected to SDS PAGE followed by western blot with 84662-3-RR (Fc epsilon RI alpha antibody) at dilution of 1:1000 incubated at room temperature for 1.5 hours.