

For Research Use Only

# KAT2A/GCN5 Recombinant antibody

Catalog Number: 84669-2-RR



## Basic Information

<b>Catalog Number:</b> 84669-2-RR	<b>GenBank Accession Number:</b> BC032743	<b>Purification Method:</b> Protein A purification
<b>Size:</b> 1000 ug/ml	<b>GeneID (NCBI):</b> 2648	<b>CloneNo.:</b> 242113C7
<b>Source:</b> Rabbit	<b>UNIPROT ID:</b> Q92830	<b>Recommended Dilutions:</b> WB 1:500-1:3000 IF/ICC 1:200-1:800
<b>Isotype:</b> IgG	<b>Full Name:</b> K(lysine) acetyltransferase 2A	
<b>Immunogen Catalog Number:</b> AG29005	<b>Calculated MW:</b> 94 kDa	
	<b>Observed MW:</b> 94 kDa	

## Applications

<b>Tested Applications:</b> WB, IF/ICC, ELISA	<b>Positive Controls:</b>
<b>Species Specificity:</b> human, rat	<b>WB :</b> HEK-293 cells, A431 cells, HeLa cells, MCF-7 cells, LNCaP cells, HSC-T6 cells
	<b>IF/ICC :</b> MCF-7 cells,

## Background Information

GCN5, encoded by KAT2A, is a member of nuclear A-type histone acetyltransferase (HAT) which has direct impact on gene transcription. Additionally, GCN5 has roles in cell cycle regulation, DNA replication, and DNA repair, highlighting it as key player in the maintenance of genome stability. GCN5 is a coactivator of c-MYC oncogene protein and has oncogenic roles in various cancers.

## Storage

**Storage:**  
Store at -20°C. Stable for one year after shipment.  
**Storage Buffer:**  
PBS with 0.02% sodium azide and 50% glycerol pH 7.3.  
Aliquoting is unnecessary for -20°C storage

For technical support and original validation data for this product please contact:

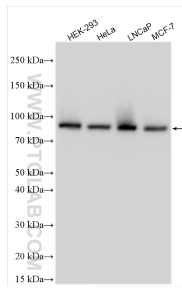
T: 4006900926

E: [Proteintech-CN@ptglab.com](mailto:Proteintech-CN@ptglab.com)

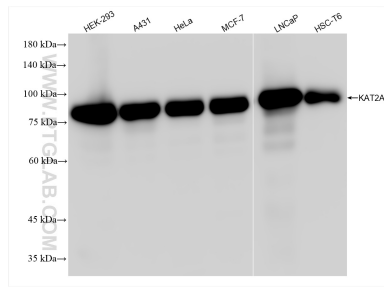
W: [ptgcn.com](http://ptgcn.com)

**This product is exclusively available under Proteintech Group brand and is not available to purchase from any other manufacturer.**

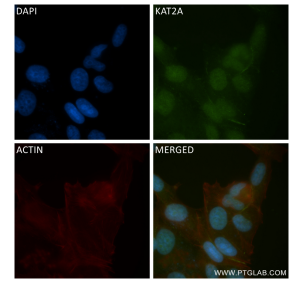
## Selected Validation Data



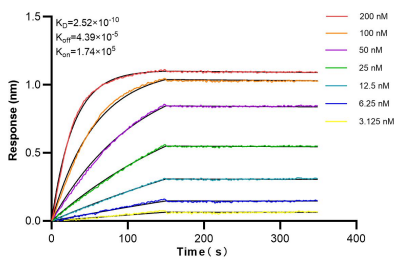
Various lysates were subjected to SDS PAGE followed by western blot with 84669-2-RR (KAT2A/GCN5 antibody) at dilution of 1:1500 incubated at room temperature for 1.5 hours.



Various lysates were subjected to SDS PAGE followed by western blot with 84669-2-RR (KAT2A/GCN5 antibody) at dilution of 1:5000 incubated at room temperature for 1.5 hours.



Immunofluorescent analysis of (4% PFA) fixed MCF-7 cells using KAT2A/GCN5 antibody (84669-2-RR, Clone: 242113C7) at dilution of 1:400 and CoraLite®488-Conjugated Goat Anti-Rabbit IgG(H+L) (SA00013-2), CL594-Phalloidin (red).



Biolayer interferometry (BLI) kinetic assays of 84669-2-RR against Human KAT2A/GCN5 were performed. The affinity constant is 0.252 nM.