

For Research Use Only

RPL11 Recombinant antibody, PBS Only

Catalog Number: 84670-3-PBS



Basic Information

Catalog Number: 84670-3-PBS	GenBank Accession Number: BC018970	Purification Method: Protein A purification
Size: 1 mg/ml	GeneID (NCBI): 6135	CloneNo.: 242147D7
Source: Rabbit	UNIPROT ID: P62913	
Isotype: IgG	Full Name: ribosomal protein L11	
Immunogen Catalog Number: AG9356	Calculated MW: 177 aa, 20 kDa	
	Observed MW: 20 kDa	

Applications

Tested Applications:
WB, Indirect ELISA

Species Specificity:
human, mouse, rat

Background Information

Ribosomal protein L11 is one of 80 mammalian ribosome proteins. It can bind to 5S ribosomal RNA, for it's required for rRNA maturation and formation of the 60S ribosomal subunit. It can inhibit 40S or 60S ribosome biogenesis via mediated p53 induction. Once retained by PICT1 in the nucleolus, RPL11 involve in regulation of the MDM2-P53 pathway and promotion of tumor progression.

Storage

Storage:
Store at -80°C.
The product is shipped with ice packs. Upon receipt, store it immediately at -80°C

Storage Buffer:
PBS Only

For technical support and original validation data for this product please contact:

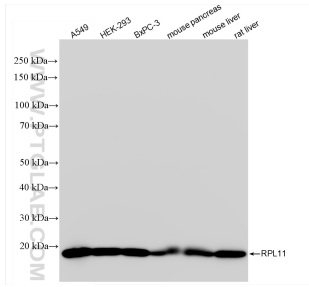
T: 4006900926

E: Proteintech-CN@ptglab.com

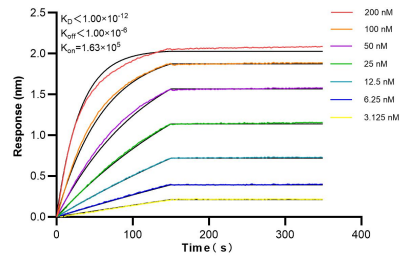
W: ptgcn.com

This product is exclusively available under Proteintech Group brand and is not available to purchase from any other manufacturer.

Selected Validation Data



Various lysates were subjected to SDS PAGE followed by western blot with 84670-3-RR (RPL11 antibody) at dilution of 1:5000 incubated at room temperature for 1.5 hours. This data was developed using the same antibody clone with 84670-3-PBS in a different storage buffer formulation.



Biolayer interferometry (BLI) kinetic assays of 84670-3-RR against Human RPL11 were performed. The affinity constant is below 1 pM.