

For Research Use Only

# FSTL1 Recombinant antibody

Catalog Number: 84672-2-RR



## Basic Information

|                                             |                                              |                                                       |
|---------------------------------------------|----------------------------------------------|-------------------------------------------------------|
| <b>Catalog Number:</b><br>84672-2-RR        | <b>GenBank Accession Number:</b><br>BC000055 | <b>Purification Method:</b><br>Protein A purification |
| <b>Size:</b><br>1000 µg/ml                  | <b>GeneID (NCBI):</b><br>11167               | <b>CloneNo.:</b><br>241900D8                          |
| <b>Source:</b><br>Rabbit                    | <b>UNIPROT ID:</b><br>Q12841                 | <b>Recommended Dilutions:</b><br>IF/ICC 1:50-1:500    |
| <b>Isotype:</b><br>IgG                      | <b>Full Name:</b><br>follistatin-like 1      |                                                       |
| <b>Immunogen Catalog Number:</b><br>AG33795 | <b>Calculated MW:</b><br>308 aa, 35 kDa      |                                                       |

## Applications

|                                              |                                                   |
|----------------------------------------------|---------------------------------------------------|
| <b>Tested Applications:</b><br>IF/ICC, ELISA | <b>Positive Controls:</b><br>IF/ICC : HeLa cells, |
| <b>Species Specificity:</b><br>human         |                                                   |

## Background Information

### Storage

**Storage:**  
Store at -20°C. Stable for one year after shipment.  
**Storage Buffer:**  
PBS with 0.02% sodium azide and 50% glycerol pH 7.3.  
Aliquoting is unnecessary for -20°C storage

For technical support and original validation data for this product please contact:

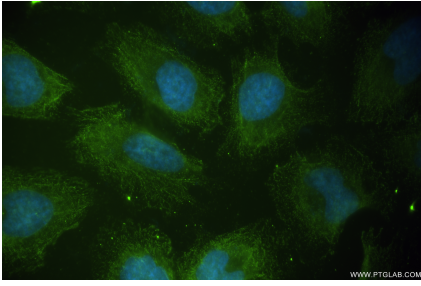
T: 4006900926

E: [Proteintech-CN@ptglab.com](mailto:Proteintech-CN@ptglab.com)

W: [ptgcn.com](http://ptgcn.com)

This product is exclusively available under Proteintech Group brand and is not available to purchase from any other manufacturer.

## Selected Validation Data



Immunofluorescent analysis of (-20°C Ethanol) fixed HeLa cells using FSTL1 antibody (84672-2-RR, Clone: 241900D8 ) at dilution of 1:200 and CoraLite®488-Conjugated Goat Anti-Rabbit IgG(H+L) (SA00013-2).