

For Research Use Only

# FSTL1 Recombinant antibody, PBS Only (Capture)

Catalog Number: 84672-3-PBS



## Basic Information

Catalog Number: 84672-3-PBS	GenBank Accession Number: BC000055	Purification Method: Protein A purification
Size: 1 mg/ml	GeneID (NCBI): 11167	CloneNo.: 241900D9
Source: Rabbit	UNIPROT ID: Q12841	
Isotype: IgG	Full Name: follistatin-like 1	
Immunogen Catalog Number: AG33795	Calculated MW: 308 aa, 35 kDa	

## Applications

**Tested Applications:**  
Cytometric bead array, Sandwich ELISA, Indirect ELISA,  
Sample test

**Species Specificity:**  
human

## Background Information

### Storage

**Storage:**  
Store at -80°C.  
**The product is shipped with ice packs. Upon receipt, store it immediately at -80°C**  
**Storage Buffer:**  
PBS Only

For technical support and original validation data for this product please contact:

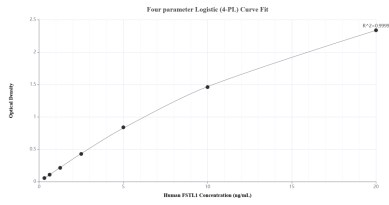
T: 4006900926

E: Proteintech-CN@ptglab.com

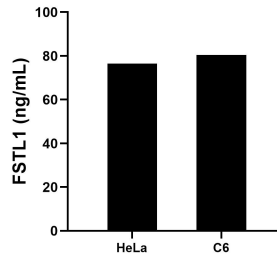
W: ptgcn.com

**This product is exclusively available under Proteintech Group brand and is not available to purchase from any other manufacturer.**

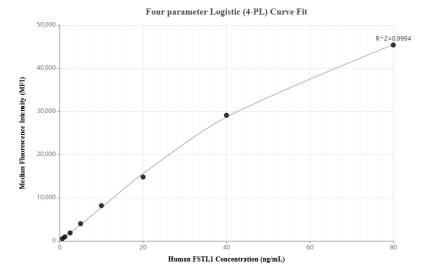
## Selected Validation Data



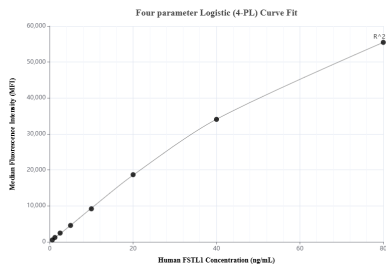
Sandwich ELISA standard curve of MP01494-2, Human FSTL1 Recombinant Matched Antibody Pair - PBS only. 84672-3-PBS was coated to a plate as the capture antibody and incubated with serial dilutions of standard Ag33795. 84672-1-PBS was HRP conjugated as the detection antibody. Range: 0.313-20 ng/mL.



The mean FSTL1 concentration was determined to be 76.49 ng/mL in HeLa cell extract based on a 1.00 mg/mL extract load and 80.42 ng/mL in C6 cell extract based on a 2.00 mg/mL extract load.



Cytometric bead array standard curve of MP01494-2, FSTL1 Recombinant Matched Antibody Pair, PBS Only. Capture antibody: 84672-3-PBS. Detection antibody: 84672-1-PBS. Standard: Ag33795. Range: 0.625-80 ng/mL.



Cytometric bead array standard curve of MP01494-1, FSTL1 Recombinant Matched Antibody Pair, PBS Only. Capture antibody: 84672-3-PBS. Detection antibody: 84672-2-PBS. Standard: Ag33795. Range: 0.625-80 ng/mL.