

For Research Use Only

SSRP1 Recombinant antibody, PBS Only (Capture)

Catalog Number: 84673-3-PBS



Basic Information

Catalog Number: 84673-3-PBS	GenBank Accession Number: BC005116	Purification Method: Protein A purification
Size: 1 mg/ml	GeneID (NCBI): 6749	CloneNo.: 242102E12
Source: Rabbit	UNIPROT ID: Q08945	
Isotype: IgG	Full Name: structure specific recognition protein 1	
Immunogen Catalog Number: AG8318	Calculated MW: 81 kDa	

Applications

Tested Applications:
Cytometric bead array, Sandwich ELISA, Indirect ELISA,
Sample test

Species Specificity:
human

Background Information

Storage

Storage:
Store at -80°C.
The product is shipped with ice packs. Upon receipt, store it immediately at -80°C
Storage Buffer:
PBS Only

For technical support and original validation data for this product please contact:

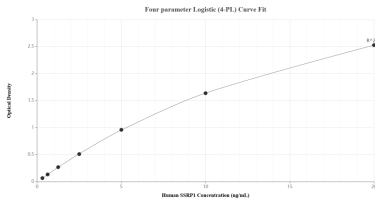
T: 4006900926

E: Proteintech-CN@ptglab.com

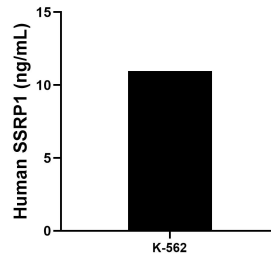
W: ptgcn.com

This product is exclusively available under Proteintech Group brand and is not available to purchase from any other manufacturer.

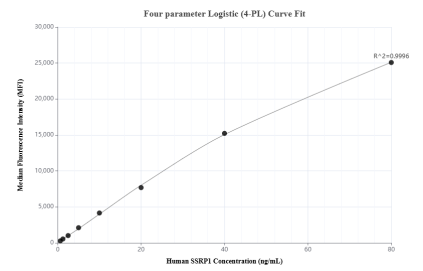
Selected Validation Data



Sandwich ELISA standard curve of MP01467-1, Human SSRP1 Recombinant Matched Antibody Pair - PBS only. 84673-3-PBS was coated to a plate as the capture antibody and incubated with serial dilutions of standard Ag8318. 84673-4-PBS was HRP conjugated as the detection antibody. Range: 0.313-20 ng/mL



The mean SSRP1 concentration was determined to be 10.96 ng/mL in K-562 cell extract based on a 2.40 mg/mL extract load.



Cytometric bead array standard curve of MP01467-1, SSRP1 Recombinant Matched Antibody Pair, PBS Only. Capture antibody: 84673-3-PBS. Detection antibody: 84673-4-PBS. Standard: Ag8318. Range: 0.625-80 ng/mL