

For Research Use Only

Siglec-9 Recombinant antibody, PBS Only (Detector)

Catalog Number:84683-5-PBS



Basic Information

Catalog Number:

84683-5-PBS

Size:

1 mg/ml

Source:

Rabbit

Isotype:

IgG

GenBank Accession Number:

NM_014441.3

GeneID (NCBI):

27180

UNIPROT ID:

Q9Y336-1

Full Name:

sialic acid binding Ig-like lectin 9

Calculated MW:

50 kDa

Purification Method:

Protein A purification

CloneNo.:

241799F2

Applications

Tested Applications:

Sandwich ELISA, Indirect ELISA, Sample test

Species Specificity:

human

Background Information

Storage

Storage:

Store at -80°C.

The product is shipped with ice packs. Upon receipt, store it immediately at -80°C

Storage Buffer:

PBS Only

For technical support and original validation data for this product please contact:

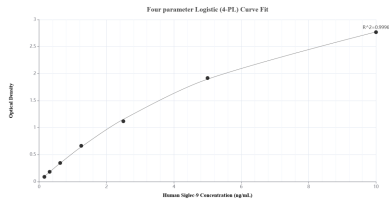
T: 4006900926

E: Proteintech-CN@ptglab.com

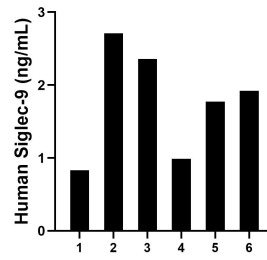
W: ptgcn.com

This product is exclusively available under Proteintech Group brand and is not available to purchase from any other manufacturer.

Selected Validation Data



Sandwich ELISA standard curve of MP01502-3, Human Siglec-9 Recombinant Matched Antibody Pair - PBS only. 84683-1-PBS was coated to a plate as the capture antibody and incubated with serial dilutions of standard Eg1084. 84683-5-PBS was HRP conjugated as the detection antibody. Range: 0.156-10 ng/mL



Serum of six individual healthy human donors was measured. The Siglec-9 concentration of detected samples was determined to be 1.76 ng/mL with a range of 0.83-2.71 ng/mL.