

For Research Use Only

AEG-1 Recombinant antibody, PBS Only (Capture)

Catalog Number: 84686-1-PBS



Basic Information

Catalog Number: 84686-1-PBS	GenBank Accession Number: BC045642	Purification Method: Protein A purification
Size: 1 mg/ml	GeneID (NCBI): 92140	CloneNo.: 242110C11
Source: Rabbit	UNIPROT ID: Q86UE4	
Isotype: IgG	Full Name: metadherin	
Immunogen Catalog Number: AG4840	Calculated MW: 582 aa, 64 kDa	

Applications

Tested Applications:
Cytometric bead array, Sandwich ELISA, Indirect ELISA,
Sample test

Species Specificity:
human

Background Information

Storage

Storage:
Store at -80°C.
The product is shipped with ice packs. Upon receipt, store it immediately at -80°C

Storage Buffer:
PBS Only

For technical support and original validation data for this product please contact:

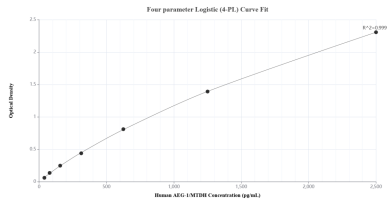
T: 4006900926

E: Proteintech-CN@ptglab.com

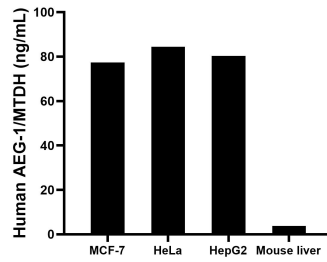
W: ptgcn.com

This product is exclusively available under Proteintech Group brand and is not available to purchase from any other manufacturer.

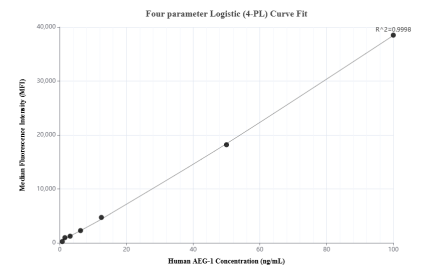
Selected Validation Data



Sandwich ELISA standard curve of MP01497-1, Human AEG-1/MTDH Recombinant Matched Antibody Pair - PBS only. 84686-1-PBS was coated to a plate as the capture antibody and incubated with serial dilutions of standard Ag4840. 84686-2-PBS was HRP conjugated as the detection antibody. Range: 39.1-2500 pg/mL



The mean AEG-1/MTDH concentration was determined to be 77.3 ng/mL in MCF-7 cell extract based on a 1.2 mg/mL extract load, 84.5 ng/mL in HeLa cell extract based on a 1.3 mg/mL extract load, 80.3 ng/mL in HepG2 cell extract based on a 3.3 mg/mL extract load and 3.8 ng/mL in mouse liver cell extract based on a 3.7 mg/mL extract load.



Cytometric bead array standard curve of MP01497-1, AEG-1/MTDH Recombinant Matched Antibody Pair, PBS Only. Capture antibody: 84686-1-PBS. Detection antibody: 84686-2-PBS. Standard: Ag4840. Range: 0.781-100 ng/mL