

For Research Use Only

Phospho-RB1 (Ser780) Recombinant antibody

Catalog Number: 84692-1-RR



Basic Information

Catalog Number: 84692-1-RR	GenBank Accession Number: BC039060	Purification Method: Protein A purification
Size: 1000 ug/ml	GeneID (NCBI): 5925	CloneNo.: 241827H7
Source: Rabbit	UNIPROT ID: P06400	Recommended Dilutions: WB 1:1000-1:8000
Isotype: IgG	Full Name: retinoblastoma 1	
	Calculated MW: 928 aa, 106 kDa	
	Observed MW: 110 kDa	

Applications

Tested Applications: WB, ELISA	Positive Controls: WB: λ phosphatase treated K-562 cells,
Species Specificity: human	

Background Information

RB1, also named as pp110, pRb and p105 Rb, belongs to the retinoblastoma protein (RB) family. It is a key regulator of entry into cell division that acts as a tumor suppressor. RB1 acts as a transcription repressor of E2F1 target genes. The underphosphorylated, active form of RB1 interacts with E2F1 and represses its transcription activity, leading to cell cycle arrest. It is directly involved in heterochromatin formation by maintaining overall chromatin structure and, in particular, that of constitutive heterochromatin by stabilizing histone methylation. It recruits and targets histone methyltransferases SUV39H1, SUV420H1 and SUV420H2, leading to epigenetic transcriptional repression. RB1 controls histone H4 'Lys-20' trimethylation and inhibits the intrinsic kinase activity of TAF1. It mediates transcriptional repression by SMARCA4/BRG1 by recruiting a histone deacetylase (HDAC) complex to the c-FOS promoter. In resting neurons, transcription of the c-FOS promoter is inhibited by BRG1-dependent recruitment of a phospho-RB1-HDAC1 repressor complex. Upon calcium influx, RB1 is dephosphorylated by calcineurin, which leads to release of the repressor complex. In case of viral infections, interactions with SV40 large T antigen, HPV E7 protein or adenovirus E1A protein induce the disassembly of RB1-E2F1 complex thereby disrupting RB1's activity. This antibody is a rabbit polyclonal antibody raised against residues near the C terminus of human RB1.

Storage

Storage:
Store at -20°C. Stable for one year after shipment.
Storage Buffer:
PBS with 0.02% sodium azide and 50% glycerol pH 7.3.
Aliquoting is unnecessary for -20°C storage

For technical support and original validation data for this product please contact:

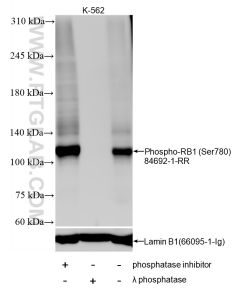
T: 4006900926

E: Proteintech-CN@ptglab.com

W: ptgcn.com

This product is exclusively available under Proteintech Group brand and is not available to purchase from any other manufacturer.

Selected Validation Data



Non-treated K-562 cells, phosphatase inhibitor treated K-562 cells and λ phosphatase treated K-562 cells were subjected to SDS PAGE followed by western blot with 84692-1-RR (Phospho-RB1 (Ser780) antibody) at dilution of 1:4000 incubated at room temperature for 1.5 hours. The membrane was stripped and re-blotted with Lamin B1 (66095-1-Ig) antibody as a loading control.