

For Research Use Only

SLC25A1 Recombinant antibody, PBS Only

Catalog Number: 84696-1-PBS



Basic Information

Catalog Number:

84696-1-PBS

Size:

1 mg/ml

Source:

Rabbit

Isotype:

IgG

GenBank Accession Number:

BC004980

GeneID (NCBI):

6576

UNIPROT ID:

P53007

Full Name:

solute carrier family 25
(mitochondrial carrier; citrate
transporter), member 1

Calculated MW:

34 kDa

Observed MW:

34 kDa

Purification Method:

Protein A purification

CloneNo.:

241931G11

Applications

Tested Applications:

WB, Indirect ELISA

Species Specificity:

human

Background Information

SLC25A1, also known as CIC or CTP, is a mitochondrial citrate transporter that exports citrate from the mitochondria to the cytosol. SLC25A1 is highly expressed in several tumor types. Recently it has been identified as a novel transcriptional target of mutant p53 and a negative tumor prognostic marker. In addition, defects in SLC25A1 have been found as a cause of combined D-2- and L-2-hydroxyglutaric aciduria. (PMID: 24681808, 23561848)

Storage

Storage:

Store at -80°C.

The product is shipped with ice packs. Upon receipt, store it immediately at -80°C

Storage Buffer:

PBS Only

For technical support and original validation data for this product please contact:

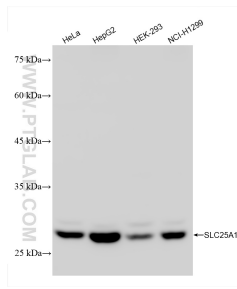
T: 4006900926

E: Proteintech-CN@ptglab.com

W: ptgcn.com

This product is exclusively available under Proteintech Group brand and is not available to purchase from any other manufacturer.

Selected Validation Data



Various lysates were subjected to SDS PAGE followed by western blot with 84696-1-RR (SLC25A1 antibody) at dilution of 1:5000 incubated at room temperature for 1.5 hours. This data was developed using the same antibody clone with 84696-1-PBS in a different storage buffer formulation.