

For Research Use Only

# SLC25A1 Recombinant antibody

Catalog Number: 84696-1-RR



## Basic Information

**Catalog Number:**

84696-1-RR

**Size:**

1000 µg/ml

**Source:**

Rabbit

**Isotype:**

IgG

**GenBank Accession Number:**

BC004980

**GeneID (NCBI):**

6576

**UNIPROT ID:**

P53007

**Full Name:**

solute carrier family 25  
(mitochondrial carrier; citrate  
transporter), member 1

**Calculated MW:**

34 kDa

**Observed MW:**

34 kDa

**Purification Method:**

Protein A purification

**CloneNo.:**

241931G11

**Recommended Dilutions:**

WB 1:2000-1:10000

## Applications

**Tested Applications:**

WB, ELISA

**Species Specificity:**

human

**Positive Controls:**

WB: HeLa cells, HepG2 cells, HEK-293 cells, NCI-H1299 cells

## Background Information

SLC25A1, also known as CIC or CTP, is a mitochondrial citrate transporter that exports citrate from the mitochondria to the cytosol. SLC25A1 is highly expressed in several tumor types. Recently it has been identified as a novel transcriptional target of mutant p53 and a negative tumor prognostic marker. In addition, defects in SLC25A1 have been found as a cause of combined D-2- and L-2-hydroxyglutaric aciduria. (PMID: 24681808, 23561848)

## Storage

**Storage:**

Store at -20°C. Stable for one year after shipment.

**Storage Buffer:**

PBS with 0.02% sodium azide and 50% glycerol pH 7.3.

Aliquoting is unnecessary for -20°C storage

For technical support and original validation data for this product please contact:

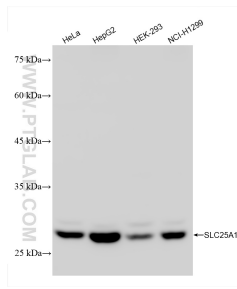
T: 4006900926

E: [Proteintech-CN@ptglab.com](mailto:Proteintech-CN@ptglab.com)

W: [ptgcn.com](http://ptgcn.com)

This product is exclusively available under Proteintech Group brand and is not available to purchase from any other manufacturer.

## Selected Validation Data



Various lysates were subjected to SDS PAGE followed by western blot with 84696-1-RR (SLC25A1 antibody) at dilution of 1:5000 incubated at room temperature for 1.5 hours.