

For Research Use Only

Di-Methyl-Histone H3 (Arg2) Recombinant antibody, PBS Only

Catalog Number: 84702-1-PBS



Basic Information

Catalog Number: 84702-1-PBS	GenBank Accession Number: BC066245	Purification Method: Protein A purification
Size: 1 mg/ml	GeneID (NCBI): 8350	CloneNo.: 241896D7
Source: Rabbit	UNIPROT ID: P68431	
Isotype: IgG	Full Name: histone cluster 1, H3a	

Applications

Tested Applications:
IF/ICC, FC (Intra), Dot Blot, Indirect ELISA

Species Specificity:
human

Background Information

Storage

Storage:
Store at -80°C.
The product is shipped with ice packs. Upon receipt, store it immediately at -80°C

Storage Buffer:
PBS Only

For technical support and original validation data for this product please contact:

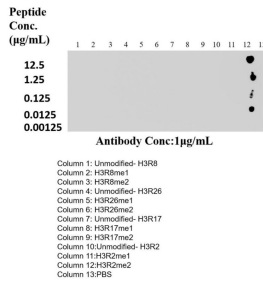
T: 4006900926

E: Proteintech-CN@ptglab.com

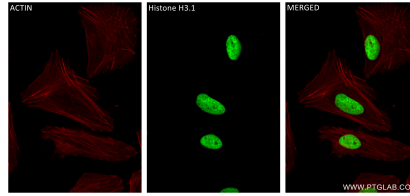
W: ptgcn.com

This product is exclusively available under Proteintech Group brand and is not available to purchase from any other manufacturer.

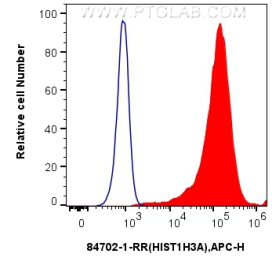
Selected Validation Data



Dot blot analysis was used to confirm the specificity of 84702-1-RR Di-Methyl-Histone H3 (Arg2) antibody. Peptides were spotted onto NC and probed with antibody at 1 µg/ml. The amount of peptide (ug/mL) spotted is indicated next to each row. This data was developed using the same antibody clone with 84702-1-PBS in a different storage buffer formulation.



Immunofluorescent analysis of (4% PFA) fixed HeLa cells using HIST1H3A antibody (84702-1-RR, Clone: 241896D7) at dilution of 1:400 and CoraLite® 488-Conjugated Goat Anti-Rabbit IgG(H+L) (SA00013-2), CL594-Phalloidin (red). This data was developed using the same antibody clone with 84702-1-PBS in a different storage buffer formulation.



1x10⁶ HeLa cells were intracellularly stained with 0.25 ug Hist1h3a Recombinant Antibody (84702-1-RR, Clone:241896D7) and APC-Conjugated Goat Anti-Rabbit IgG(H+L) (red), or 0.25 ug Rabbit IgG Isotype Control Recombinant Antibody (98136-1-RR, Clone: 240953C9) (blue). Cells were fixed and permeabilized with True-Nuclear Transcription Factor Buffer Set. This data was developed using the same antibody clone with 84702-1-PBS in a different storage buffer