

For Research Use Only

# Di-Methyl-Histone H3 (Arg2) Recombinant antibody

Catalog Number: 84702-1-RR



## Basic Information

Catalog Number:

84702-1-RR

Size:

1000 µg/ml

Source:

Rabbit

Isotype:

IgG

GenBank Accession Number:

BC066245

GeneID (NCBI):

8350

UNIPROT ID:

P68431

Full Name:

histone cluster 1, H3a

Purification Method:

Protein A purification

CloneNo.:

241896D7

Recommended Dilutions:

IF/ICC 1:200-1:800

## Applications

Tested Applications:

IF/ICC, FC (Intra), Dot Blot, ELISA

Species Specificity:

human

Positive Controls:

IF/ICC : HeLa cells,

## Background Information

### Storage

Storage:

Store at -20°C. Stable for one year after shipment.

Storage Buffer:

PBS with 0.02% sodium azide and 50% glycerol pH 7.3.

Aliquoting is unnecessary for -20°C storage

For technical support and original validation data for this product please contact:

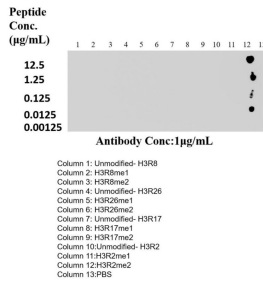
T: 4006900926

E: [Proteintech-CN@ptglab.com](mailto:Proteintech-CN@ptglab.com)

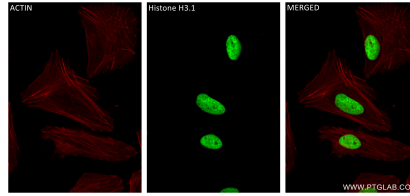
W: [ptgcn.com](http://ptgcn.com)

This product is exclusively available under Proteintech Group brand and is not available to purchase from any other manufacturer.

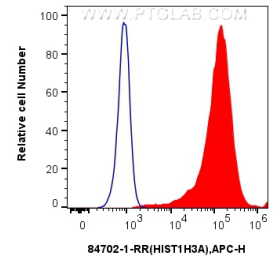
## Selected Validation Data



Dot blot analysis was used to confirm the specificity of 84702-1-RR Di-Methyl-Histone H3 (Arg2) antibody. Peptides were spotted onto NC and probed with antibody at 1 µg/ml. The amount of peptide (ug/mL) spotted is indicated next to each row.



Immunofluorescent analysis of (4% PFA) fixed HeLa cells using HIST1H3A antibody (84702-1-RR, Clone: 241896D7) at dilution of 1:400 and CoraLite® 488-Conjugated Goat Anti-Rabbit IgG(H+L) (SA00013-2), CL594-Phalloidin (red).



$1 \times 10^6$  HeLa cells were intracellularly stained with 0.25 µg Hist1h3a Recombinant Antibody (84702-1-RR, Clone: 241896D7) and APC-Conjugated Goat Anti-Rabbit IgG(H+L)(red), or 0.25 µg Rabbit IgG Isotype Control Recombinant Antibody (98136-1-RR, Clone: 240953C9) (blue). Cells were fixed and permeabilized with True-Nuclear Transcription Factor Buffer Set.