

For Research Use Only

# APLP2 Recombinant antibody, PBS Only

Catalog Number: 84703-3-PBS



## Basic Information

<b>Catalog Number:</b> 84703-3-PBS	<b>GenBank Accession Number:</b> BC000373	<b>Purification Method:</b> Protein A purification
<b>Size:</b> 1 mg/ml	<b>GeneID (NCBI):</b> 334	<b>CloneNo.:</b> 241655G7
<b>Source:</b> Rabbit	<b>UNIPROT ID:</b> Q06481	
<b>Isotype:</b> IgG	<b>Full Name:</b> amyloid beta (A4) precursor-like protein 2	
<b>Immunogen Catalog Number:</b> AG6842	<b>Calculated MW:</b> 87 kDa	
	<b>Observed MW:</b> 95-120 kDa	

## Applications

**Tested Applications:**  
WB, Indirect ELISA

**Species Specificity:**  
human, mouse, rat

## Background Information

Amyloid precursor-like protein-2 (APLP2) is a member of the APP (amyloid precursor protein) family including APP, APLP1, and APLP2. APLP2 is ubiquitously expressed. It contains heparin-, copper- and zinc- binding domains at the N-terminus, BPTI/Kunitz inhibitor and E2 domains in the middle region, and transmembrane and intracellular domains at the C-terminus. APLP2 has been shown to regulate multiple cellular functions such as neurite outgrowth, axogenesis, corneal epithelial wound healing, cell adhesion, migration, and mitosis. The synergy of this protein and the APP is required to mediate neuromuscular transmission, spatial learning and synaptic plasticity. APLP2 has been implicated in the pathogenesis of Alzheimer's disease.

## Storage

**Storage:**  
Store at -80°C.  
**The product is shipped with ice packs. Upon receipt, store it immediately at -80°C**

**Storage Buffer:**  
PBS Only

For technical support and original validation data for this product please contact:

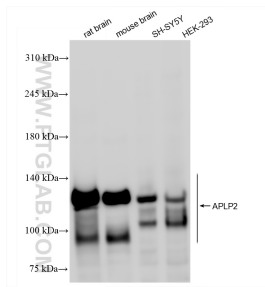
T: 4006900926

E: [Proteintech-CN@ptglab.com](mailto:Proteintech-CN@ptglab.com)

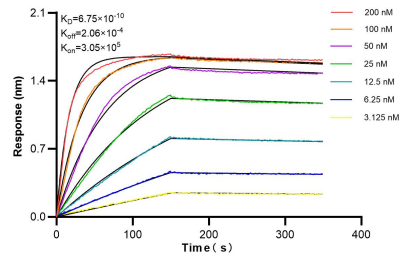
W: [ptgcn.com](http://ptgcn.com)

**This product is exclusively available under Proteintech Group brand and is not available to purchase from any other manufacturer.**

## Selected Validation Data



Various lysates were subjected to SDS PAGE followed by western blot with 84703-3-RR (APLP2 antibody) at dilution of 1:1000 incubated at room temperature for 1.5 hours. This data was developed using the same antibody clone with 84703-3-PBS in a different storage buffer formulation.



Biolayer interferometry (BLI) kinetic assays of 84703-3-RR against Human APLP2 were performed. The affinity constant is 0.675 nM.