

For Research Use Only

# ATP1B1 Recombinant antibody, PBS Only (Capture)

Catalog Number: 84707-3-PBS



## Basic Information

|  |   |   |
|--|---|---|
| <b>Catalog Number:</b><br>84707-3-PBS      | <b>GenBank Accession Number:</b><br>BC000006  | <b>Purification Method:</b><br>Protein A purification |
| <b>Size:</b><br>1 mg/ml                    | <b>GeneID (NCBI):</b><br>481  | <b>CloneNo.:</b><br>242109F9                          |
| <b>Source:</b><br>Rabbit                   | <b>UNIPROT ID:</b><br>P05026  |   |
| <b>Isotype:</b><br>IgG                     | <b>Full Name:</b><br>ATPase, Na <sup>+</sup> /K <sup>+</sup> transporting, beta 1 polypeptide |   |
| <b>Immunogen Catalog Number:</b><br>AG7279 | <b>Calculated MW:</b><br>35 kDa   |   |

## Applications

**Tested Applications:**  
Cytometric bead array, Indirect ELISA

**Species Specificity:**  
human

## Background Information

### Storage

**Storage:**  
Store at -80°C.  
**The product is shipped with ice packs. Upon receipt, store it immediately at -80°C**

**Storage Buffer:**  
PBS Only

For technical support and original validation data for this product please contact:

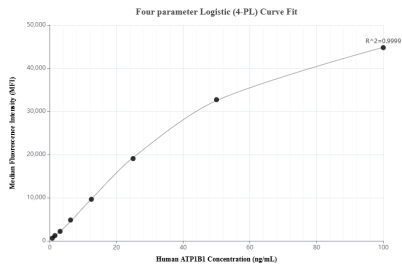
T: 4006900926

E: [Proteintech-CN@ptglab.com](mailto:Proteintech-CN@ptglab.com)

W: [ptgcn.com](http://ptgcn.com)

**This product is exclusively available under Proteintech Group brand and is not available to purchase from any other manufacturer.**

## Selected Validation Data



Cytometric bead array standard curve of MP01519-1, ATP1B1 Recombinant Matched Antibody Pair, PBS Only. Capture antibody: 84707-3-PBS. Detection antibody: 84707-1-PBS. Standard: Ag7279. Range: 0.781-100 ng/mL.