

For Research Use Only

# ATP1B1 Recombinant antibody, PBS Only

Catalog Number: 84707-5-PBS



## Basic Information

<b>Catalog Number:</b> 84707-5-PBS	<b>GenBank Accession Number:</b> BC000006	<b>Purification Method:</b> Protein A purification
<b>Size:</b> 1 mg/ml	<b>GeneID (NCBI):</b> 481	<b>CloneNo.:</b> 242109D12
<b>Source:</b> Rabbit	<b>UNIPROT ID:</b> P05026	
<b>Isotype:</b> IgG	<b>Full Name:</b> ATPase, Na <sup>+</sup> /K <sup>+</sup> transporting, beta 1 polypeptide	
<b>Immunogen Catalog Number:</b> AG7279	<b>Calculated MW:</b> 35 kDa	
	<b>Observed MW:</b> 45-52 kDa	

## Applications

**Tested Applications:**  
WB, Indirect ELISA

**Species Specificity:**  
human, mouse, rat

## Background Information

ATP1B1 is one of beta subunits of the Na<sup>+</sup>/K<sup>+</sup> ATPase and responsible for formation and structural integrity of the Na<sup>+</sup>/K<sup>+</sup> ATPase. The Na<sup>+</sup>/K<sup>+</sup> ATPase is a plasma membrane pump consisting of alpha, beta, and gamma subunits. At least four of Na<sup>+</sup>/K<sup>+</sup>-ATPase beta subunits ( $\beta$  1,  $\beta$  2,  $\beta$  3,  $\beta$  4) have been identified in mammalian cells; the  $\beta$  1-subunit (ATP1B1) is the most ubiquitous. The Na<sup>+</sup>/K<sup>+</sup> ATPase  $\beta$  subunits have multiple N-glycosylation sites. The predicted MW of ATP1B1 is 35 kDa, while it migrates around 40-52 kDa due to the variable glycosylation. (PMID: 10896885, 17714085)

## Storage

**Storage:**  
Store at -80°C.  
**The product is shipped with ice packs. Upon receipt, store it immediately at -80°C**

**Storage Buffer:**  
PBS Only

For technical support and original validation data for this product please contact:

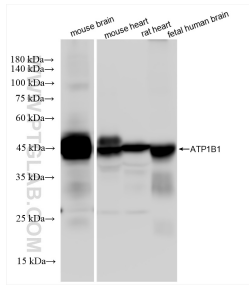
T: 4006900926

E: Proteintech-CN@ptglab.com

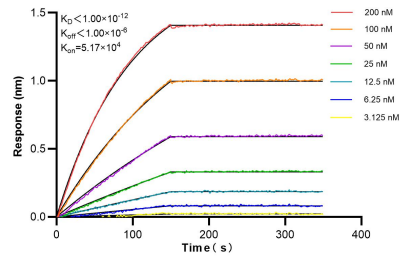
W: ptgcn.com

**This product is exclusively available under Proteintech Group brand and is not available to purchase from any other manufacturer.**

## Selected Validation Data



Various lysates were subjected to SDS PAGE followed by western blot with 84707-5-RR (ATP1B1 antibody) at dilution of 1:5000 incubated at room temperature for 1.5 hours. This data was developed using the same antibody clone with 84707-5-PBS in a different storage buffer formulation.



Biolayer interferometry (BLI) kinetic assays of 84707-5-RR against Human ATP1B1 were performed. The affinity constant is below 1 pM.