

For Research Use Only

C12orf29 Recombinant antibody, PBS Only (Capture)

Catalog Number: 84708-1-PBS



Basic Information

Catalog Number: 84708-1-PBS	GenBank Accession Number: NM_001009894.2	Purification Method: Protein A purification
Size: 1 mg/ml	GeneID (NCBI): 91298	CloneNo.: 242163C3
Source: Rabbit	UNIPROT ID: Q8N999	
Isotype: IgG	Full Name: chromosome 12 open reading frame 29	
Immunogen Catalog Number: AG35681	Calculated MW: 37kDa, 325aa	
	Observed MW: 37 kDa	

Applications

Tested Applications:
WB, Cytometric bead array, Indirect ELISA

Species Specificity:
human, rat

Background Information

C12orf29, also known as RLIG1, is a 37 kDa human protein consisting of 325 amino acids. It catalyzes ATP-dependent RNA ligation via a three-step mechanism involving tandem auto- and RNA AMPylation (PMID: 36792600).

Storage

Storage:
Store at -80°C.
The product is shipped with ice packs. Upon receipt, store it immediately at -80°C

Storage Buffer:
PBS Only

For technical support and original validation data for this product please contact:

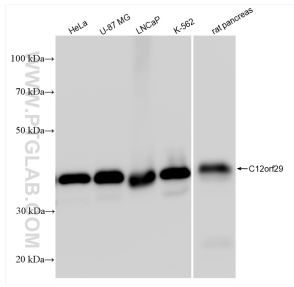
T: 4006900926

E: Proteintech-CN@ptglab.com

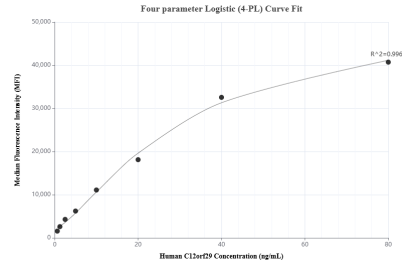
W: ptgcn.com

This product is exclusively available under Proteintech Group brand and is not available to purchase from any other manufacturer.

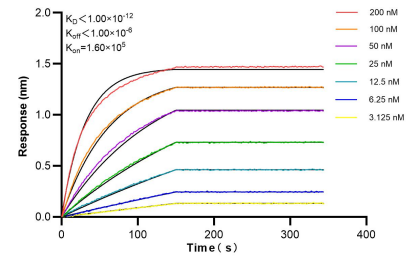
Selected Validation Data



HeLa cells were subjected to SDS PAGE followed by western blot with 84708-1-RR (C12orf29 antibody) at dilution of 1:10000 incubated at room temperature for 1.5 hours. This data was developed using the same antibody clone with 84708-1-PBS in a different storage buffer formulation.



Cytometric bead array standard curve of MP01512-1, C12orf29 Recombinant Matched Antibody Pair, PBS Only. Capture antibody: 84708-1-PBS. Detection antibody: 84708-2-PBS. Standard: Ag35681. Range: 0.625-80 ng/mL.



Bi-layer interferometry (BLI) kinetic assays of 84708-1-RR against Human C12orf29 were performed. The affinity constant is below 1 pM.