

For Research Use Only

C12orf29 Recombinant antibody

Catalog Number:84708-1-RR



Basic Information

Catalog Number:

84708-1-RR

Size:

1000 µg/ml

Source:

Rabbit

Isotype:

IgG

Immunogen Catalog Number:

AG35681

GenBank Accession Number:

NM_001009894.2

GeneID (NCBI):

91298

UNIPROT ID:

Q8N999

Full Name:

chromosome 12 open reading frame

29

Calculated MW:

37kDa, 325aa

Observed MW:

37 kDa

Purification Method:

Protein A purification

CloneNo.:

242163C3

Recommended Dilutions:

WB 1:5000-1:50000

Applications

Tested Applications:

WB, ELISA

Species Specificity:

human, rat

Positive Controls:

WB : HeLa cells, U-87 MG cells, LNCaP cells, K-562 cells, rat pancreas tissue

Background Information

C12orf29, also known as RLIG1, is a 37 kDa human protein consisting of 325 amino acids. It catalyzes ATP-dependent RNA ligation via a three-step mechanism involving tandem auto- and RNA AMPylation (PMID: 36792600).

Storage

Storage:

Store at -20°C. Stable for one year after shipment.

Storage Buffer:

PBS with 0.02% sodium azide and 50% glycerol pH 7.3.

Aliquoting is unnecessary for -20°C storage

For technical support and original validation data for this product please contact:

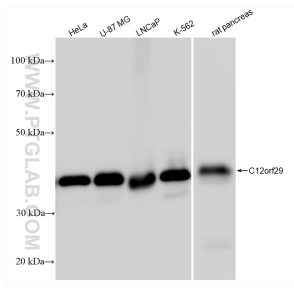
T: 4006900926

E: Proteintech-CN@ptglab.com

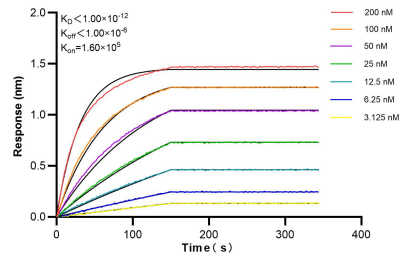
W: ptgcn.com

This product is exclusively available under Proteintech Group brand and is not available to purchase from any other manufacturer.

Selected Validation Data



HeLa cells were subjected to SDS PAGE followed by western blot with 84708-1-RR (C12orf29 antibody) at dilution of 1:10000 incubated at room temperature for 1.5 hours.



Biolayer interferometry (BLI) kinetic assays of 84708-1-RR against Human C12orf29 were performed. The affinity constant is below 1 pM.