

For Research Use Only

# AP4B1 Recombinant antibody

Catalog Number:84710-3-RR



## Basic Information

**Catalog Number:**

84710-3-RR

**Size:**

1000 ug/ml

**Source:**

Rabbit

**Isotype:**

IgG

**Immunogen Catalog Number:**

AG9348

**GenBank Accession Number:**

BC014146

**GeneID (NCBI):**

10717

**UNIPROT ID:**

Q9Y6B7

**Full Name:**

adaptor-related protein complex 4,  
beta 1 subunit

**Calculated MW:**

739 aa, 83 kDa

**Observed MW:**

~75 kDa

**Purification Method:**

Protein A purification

**CloneNo.:**

242121D4

**Recommended Dilutions:**

WB 1:2000-1:10000  
IP 0.5-4.0 ug for 1.0-3.0 mg of total  
protein lysate

## Applications

**Tested Applications:**

WB, IP, ELISA

**Species Specificity:**

human, mouse

**Positive Controls:**

WB : MDA-MB-231 cells, MCF-7 cells, HeLa cells, HuH-7  
cells, SH-SY5Y cells, NIH/3T3 cells

IP : HeLa cells,

## Background Information

Adaptor protein (AP) complex is a component of intracellular protein transport. The AP4 complex is involved in sorting transmembrane cargo proteins into transport vesicles for trans-Golgi network export. AP4B1 is a member of the AP4 complex, which also includes AP4E1, AP4M1 and AP4S1. Loss-of-function variants in any of these four members can lead to AP-4-associated hereditary spastic paraplegia (HSP), a neurodegenerative disorder (PMID: 30543385). This antibody recognizes AP4B1.

## Storage

**Storage:**

Store at -20°C. Stable for one year after shipment.

**Storage Buffer:**

PBS with 0.02% sodium azide and 50% glycerol pH 7.3.

Aliquoting is unnecessary for -20°C storage

For technical support and original validation data for this product please contact:

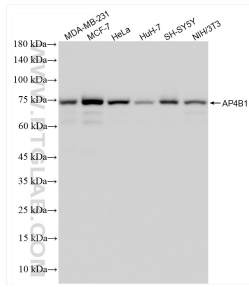
T: 4006900926

E: [Proteintech-CN@ptglab.com](mailto:Proteintech-CN@ptglab.com)

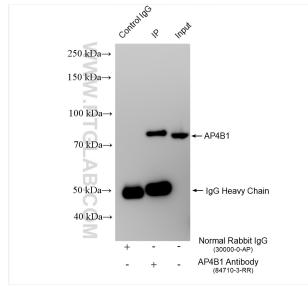
W: [ptgcn.com](http://ptgcn.com)

**This product is exclusively available under Proteintech Group brand and is not available to purchase from any other manufacturer.**

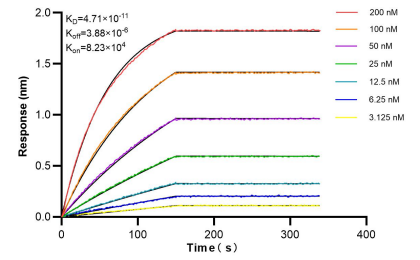
## Selected Validation Data



Various lysates were subjected to SDS PAGE followed by western blot with 84710-3-RR (AP4B1 antibody) at dilution of 1:5000 incubated at room temperature for 1.5 hours.



IP result of anti-AP4B1 (IP:84710-3-RR, 4ug; Detection:84710-3-RR 1:1500) with HeLa cells lysate 1200 ug.



Bi-layer interferometry (BLI) kinetic assays of 84710-3-RR against Human AP4B1 were performed. The affinity constant is 47.1 pM.