

For Research Use Only

PRDM8 Recombinant antibody, PBS Only (Capture)

Catalog Number:84716-2-PBS



Basic Information

Catalog Number:

84716-2-PBS

Size:

1 mg/ml

Source:

Rabbit

Isotype:

IgG

Immunogen Catalog Number:

AG23373

GenBank Accession Number:

BC071584

GeneID (NCBI):

56978

UNIPROT ID:

Q9NQV8

Full Name:

PR domain containing 8

Purification Method:

Protein A purification

CloneNo.:

242203D8

Applications

Tested Applications:

WB, IHC, IF-P, Cytometric bead array, Indirect ELISA

Species Specificity:

human, mouse

Background Information

PRDI-BF1 and RIZ homology domain zinc finger protein 8 (PRDM8) belongs to the PRDM family characterized by a conserved N-terminal PR domain related to the catalytic SET domains. PRDM8 is a key regulator in neural development and testis steroidogenesis (PMID: 32819411). PRDM8 is mainly demonstrated as a crucial regulatory molecule during neural development and testis steroidogenesis and expressed at low levels in HCC tissues (PMID: 29572888).

Storage

Storage:

Store at -80°C.

The product is shipped with ice packs. Upon receipt, store it immediately at -80°C

Storage Buffer:

PBS Only

For technical support and original validation data for this product please contact:

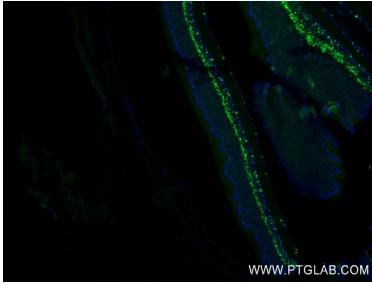
T: 4006900926

E: Proteintech-CN@ptglab.com

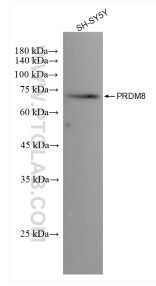
W: ptgcn.com

This product is exclusively available under Proteintech Group brand and is not available to purchase from any other manufacturer.

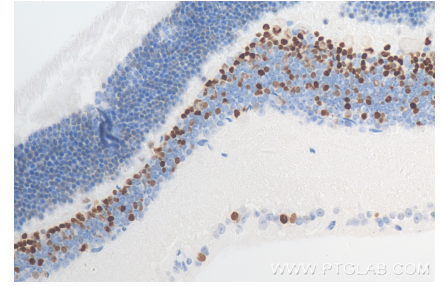
Selected Validation Data



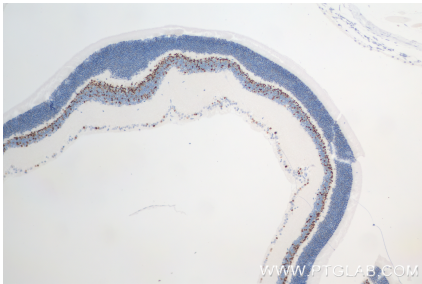
Immunofluorescent analysis of (4% PFA) fixed paraffin-embedded mouse eye tissue using PRDM8 antibody (84716-2-RR, Clone: 242203D8) at dilution of 1:200 and CoraLite®488-Conjugated Goat Anti-Rabbit IgG(H+L) (SA00013-2). Heat mediated antigen retrieval with Tris-EDTA buffer (pH 9.0). This data was developed using the same antibody clone with 84716-2-PBS in a different storage buffer formulation.



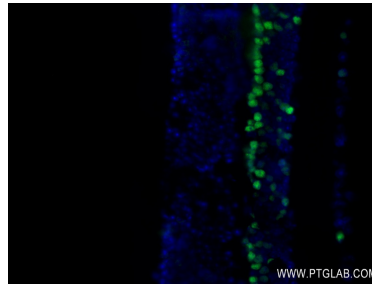
Various lysates were subjected to SDS PAGE followed by western blot with 84716-2-RR (PRDM8 antibody) at dilution of 1:1000 incubated at room temperature for 1.5 hours. This data was developed using the same antibody clone with 84716-2-PBS in a different storage buffer formulation.



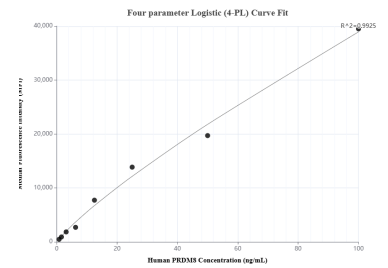
Immunohistochemical analysis of paraffin-embedded mouse eye tissue slide using 84716-2-RR (PRDM8 antibody) at dilution of 1:400 (under 40x lens). Heat mediated antigen retrieval with Tris-EDTA buffer (pH 9.0). This data was developed using the same antibody clone with 84716-2-PBS in a different storage buffer formulation.



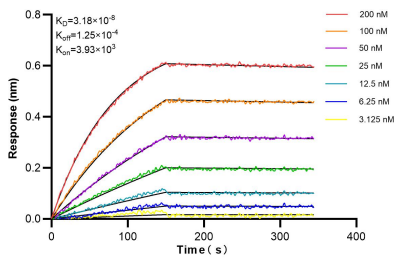
Immunohistochemical analysis of paraffin-embedded mouse eye tissue slide using 84716-2-RR (PRDM8 antibody) at dilution of 1:400 (under 10x lens). Heat mediated antigen retrieval with Tris-EDTA buffer (pH 9.0). This data was developed using the same antibody clone with 84716-2-PBS in a different storage buffer formulation.



Immunofluorescent analysis of (4% PFA) fixed paraffin-embedded mouse eye tissue using PRDM8 antibody (84716-2-RR, Clone: 242203D8) at dilution of 1:200 and CoraLite®488-Conjugated Goat Anti-Rabbit IgG(H+L) (SA00013-2). Heat mediated antigen retrieval with Tris-EDTA buffer (pH 9.0). This data was developed using the same antibody clone with 84716-2-PBS in a different storage buffer formulation.



Cytometric bead array standard curve of MP01532-1, PRDM8 Recombinant Matched Antibody Pair, PBS Only. Capture antibody: 84716-2-PBS. Detection antibody: 84716-3-PBS. Standard: Ag23373. Range: 0.781-100 ng/mL



Bi-layer interferometry (BLI) kinetic assays of 84716-2-RR against Human PRDM8 were performed. The affinity constant is 31.8 nM.