

For Research Use Only

# MXI1 Recombinant antibody

Catalog Number: 84733-5-RR



## Basic Information

<b>Catalog Number:</b> 84733-5-RR	<b>GenBank Accession Number:</b> BC012907	<b>Purification Method:</b> Protein A purification
<b>Size:</b> 1000 ug/ml	<b>GeneID (NCBI):</b> 4601	<b>CloneNo.:</b> 242089D2
<b>Source:</b> Rabbit	<b>UNIPROT ID:</b> P50539	<b>Recommended Dilutions:</b> WB 1:1000-1:6000
<b>Isotype:</b> IgG	<b>Full Name:</b> MAX interactor 1	
<b>Immunogen Catalog Number:</b> AG3024	<b>Calculated MW:</b> 228 aa, 26 kDa	
	<b>Observed MW:</b> 36 kDa	

## Applications

<b>Tested Applications:</b> WB, FC (Intra), ELISA	<b>Positive Controls:</b> WB : A549 cells, HeLa cells, mouse brain tissue
<b>Species Specificity:</b> human, mouse	

## Background Information

MXI1 is a transcription factor containing a basic helix-loop-helix leucine zipper (bHLHzip) and belongs to the Myc-Max-Mad transcriptional network. It is a transcriptional repressor thought to negatively regulate MYC function, and is therefore a potential tumor suppressor. This protein inhibits the transcriptional activity of MYC by competing for MAX, another basic helix-loop-helix protein that binds to MYC and is required for its function. Defects in this gene are frequently found in patients with prostate tumors.

## Storage

**Storage:**  
Store at -20°C. Stable for one year after shipment.  
**Storage Buffer:**  
PBS with 0.02% sodium azide and 50% glycerol pH 7.3.  
Aliquoting is unnecessary for -20°C storage

For technical support and original validation data for this product please contact:

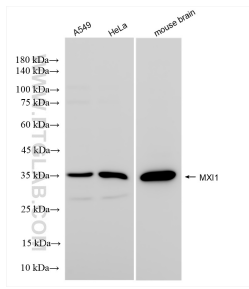
T: 4006900926

E: Proteintech-CN@ptglab.com

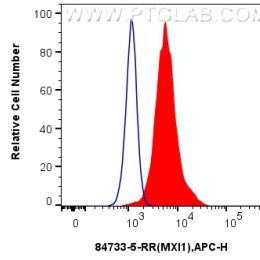
W: ptgcn.com

**This product is exclusively available under Proteintech Group brand and is not available to purchase from any other manufacturer.**

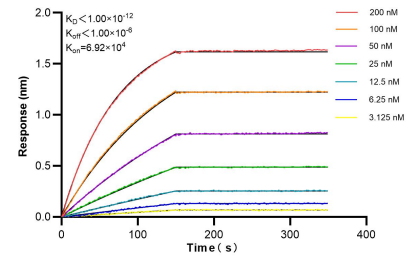
## Selected Validation Data



Various lysates were subjected to SDS PAGE followed by western blot with 84733-5-RR (MXI1 antibody) at dilution of 1:3000 incubated at room temperature for 1.5 hours.



$1 \times 10^6$  HeLa cells were intracellularly stained with 0.25  $\mu$ g MXI1 Recombinant antibody (84733-5-RR, Clone:242089D2) and Multi-rAb CoraLite® Plus 647-Goat Anti-Rabbit Recombinant Secondary Antibody (H+L) (RGAR005)(red), or 0.25  $\mu$ g Rabbit IgG Isotype Control Recombinant Antibody (98136-1-RR, Clone: 240953C9) (blue). Cells were fixed with 4% PFA and permeabilized with Flow Cytometry Perm Buffer (PF00011-C).



Biacore kinetic assays of 84733-5-RR against Human MXI1 were performed. The affinity constant is below 1 pM.