

For Research Use Only

MXI1 Recombinant antibody, PBS Only

Catalog Number: 84733-6-PBS



Basic Information

Catalog Number:

84733-6-PBS

Concentration:

1 mg/ml

Source:

Rabbit

Isotype:

IgG

Immunogen Catalog Number:

AG3024

GenBank Accession Number:

BC012907

GeneID (NCBI):

4601

UNIPROT ID:

P50539

Full Name:

MAX interactor 1

Calculated MW:

228 aa, 26 kDa

Purification Method:

Protein A purification

CloneNo.:

242089D5

Applications

Tested Applications:

IF/ICC, FC (Intra), Indirect ELISA

Species Specificity:

human

Background Information

MXI1 is a transcription factor containing a basic helix-loop-helix leucine zipper (bHLHzip) and belongs to the Myc-Max-Mad transcriptional network. It is a transcriptional repressor thought to negatively regulate MYC function, and is therefore a potential tumor suppressor. This protein inhibits the transcriptional activity of MYC by competing for MAX, another basic helix-loop-helix protein that binds to MYC and is required for its function. Defects in this gene are frequently found in patients with prostate tumors.

Storage

Storage:

Store at -80°C.

The product is shipped with ice packs. Upon receipt, store it immediately at -80°C

Storage Buffer:

PBS Only

For technical support and original validation data for this product please contact:

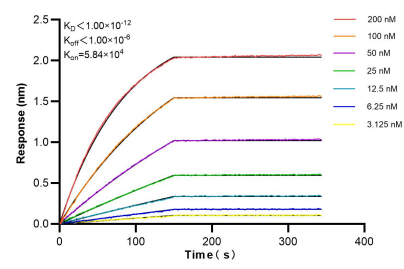
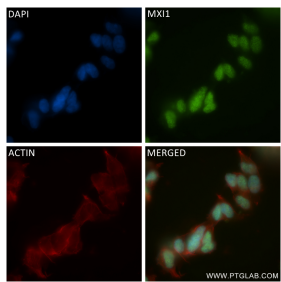
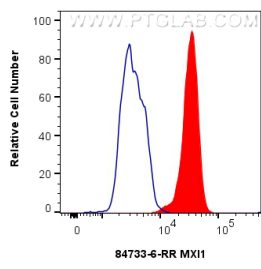
T: 4006900926

E: Proteintech-CN@ptglab.com

W: ptgcn.com

This product is exclusively available under Proteintech Group brand and is not available to purchase from any other manufacturer.

Selected Validation Data



1x10⁶ HeLa cells were intracellularly stained with 0.25 ug MXI1 Recombinant antibody (84733-6-RR, Clone:242089D5) and CoraLite®488-Conjugated Goat Anti-Rabbit IgG(H+L) (SA00013-2)(red), or 0.25 ug Rabbit IgG Isotype Control RecAb (98136-1-RR, Clone: 240953C9) (blue). Cells were fixed and permeabilized with Transcription Factor Staining Buffer Kit (PF00011). This data was developed using the same antibody clone with 84733-6-PBS in a different storage buffer

Immunofluorescent analysis of (4% PFA) fixed SH-SY5Y cells using MXI1 antibody (84733-6-RR, Clone: 242089D5) at dilution of 1:400 and CoraLite®488-Conjugated Goat Anti-Rabbit IgG(H+L) (SA00013-2), CL594-Phalloidin (red). This data was developed using the same antibody clone with 84733-6-PBS in a different storage buffer formulation.

Biolayer interferometry (BLI) kinetic assays of 84733-6-RR against Human MXI1 were performed. The affinity constant is below 1 pM.