

For Research Use Only

C17orf68 Recombinant antibody, PBS Only

Catalog Number: 84737-1-PBS



Basic Information

Catalog Number: 84737-1-PBS	GenBank Accession Number: BC111783	Purification Method: Protein A purification
Size: 1 mg/ml	GeneID (NCBI): 80169	CloneNo.: 241152C6
Source: Rabbit	UNIPROT ID: Q2NKJ3	
Isotype: IgG	Full Name: chromosome 17 open reading frame 68	
Immunogen Catalog Number: AG28167	Calculated MW: 1217 aa, 135 kDa	
	Observed MW: 140/145 kDa	

Applications

Tested Applications:
WB, Indirect ELISA

Species Specificity:
human

Background Information

Conserved telomere maintenance component 1 (CTC1) is a subunit of an alpha accessory factor (AAF) that stimulates the activity of DNA polymerase-alpha-primase, the enzyme that initiates DNA replication (PMID: 19119139). CTC1 also functions in a telomere-associated complex with STN1 and TEN1 (PMID: 19854130).

Storage

Storage:
Store at -80°C.
The product is shipped with ice packs. Upon receipt, store it immediately at -80°C

Storage Buffer:
PBS Only

For technical support and original validation data for this product please contact:

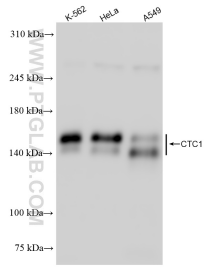
T: 4006900926

E: Proteintech-CN@ptglab.com

W: ptgcn.com

This product is exclusively available under Proteintech Group brand and is not available to purchase from any other manufacturer.

Selected Validation Data



Various lysates were subjected to SDS PAGE followed by western blot with 84737-1-RR (C17orf68 antibody) at dilution of 1:1000 incubated at room temperature for 1.5 hours. This data was developed using the same antibody clone with 84737-1-PBS in a different storage buffer formulation.