

For Research Use Only

C17orf68 Recombinant antibody

Catalog Number: 84737-1-RR



Basic Information

Catalog Number: 84737-1-RR	GenBank Accession Number: BC111783	Purification Method: Protein A purification
Size: 1000 µg/ml	GeneID (NCBI): 80169	CloneNo.: 241152C6
Source: Rabbit	UNIPROT ID: Q2NKJ3	Recommended Dilutions: WB 1:500-1:2000
Isotype: IgG	Full Name: chromosome 17 open reading frame 68	
Immunogen Catalog Number: AG28167	Calculated MW: 1217 aa, 135 kDa	
	Observed MW: 140/145 kDa	

Applications

Tested Applications: WB, ELISA	Positive Controls: WB : K-562 cells,
Species Specificity: human	

Background Information

Conserved telomere maintenance component 1 (CTC1) is a subunit of an alpha accessory factor (AAF) that stimulates the activity of DNA polymerase-alpha-primase, the enzyme that initiates DNA replication (PMID: 19119139). CTC1 also functions in a telomere-associated complex with STN1 and TEN1 (PMID: 19854130).

Storage

Storage:
Store at -20°C. Stable for one year after shipment.
Storage Buffer:
PBS with 0.02% sodium azide and 50% glycerol pH 7.3.
Aliquoting is unnecessary for -20°C storage

For technical support and original validation data for this product please contact:

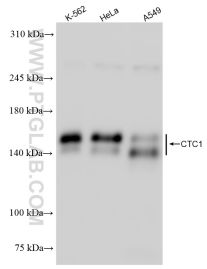
T: 4006900926

E: Proteintech-CN@ptglab.com

W: ptgcn.com

This product is exclusively available under Proteintech Group brand and is not available to purchase from any other manufacturer.

Selected Validation Data



Various lysates were subjected to SDS PAGE followed by western blot with 84737-1-RR (C17orf68 antibody) at dilution of 1:1000 incubated at room temperature for 1.5 hours.