

For Research Use Only

# RAB7A Recombinant antibody, PBS Only

Catalog Number: 84741-1-PBS



## Basic Information

<b>Catalog Number:</b> 84741-1-PBS	<b>GenBank Accession Number:</b> NM_004637	<b>Purification Method:</b> Protein A purification
<b>Size:</b> 1 mg/ml	<b>GeneID (NCBI):</b> 7879	<b>CloneNo.:</b> 241948B4
<b>Source:</b> Rabbit	<b>UNIPROT ID:</b> P51149	
<b>Isotype:</b> IgG	<b>Full Name:</b> RAB7A, member RAS oncogene family	
	<b>Calculated MW:</b> 23 kDa	
	<b>Observed MW:</b> 23 kDa	

## Applications

**Tested Applications:**  
WB, IF/ICC, FC (Intra), Indirect ELISA

**Species Specificity:**  
human, mouse, rat

## Background Information

RAB7A, also named as RAB7, belongs to the small GTPase superfamily and Rab family. It is involved in late endocytic transport. RAB7A contributes to the maturation of phagosomes (acidification). Defects in RAB7A are the cause of Charcot-Marie-Tooth disease type 2B (CMT2B). This antibody is specific to RAB7A.

## Storage

**Storage:**  
Store at -80°C.  
**The product is shipped with ice packs. Upon receipt, store it immediately at -80°C**

**Storage Buffer:**  
PBS Only

For technical support and original validation data for this product please contact:

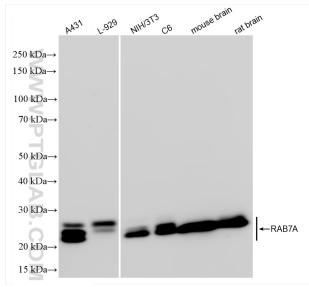
T: 4006900926

E: Proteintech-CN@ptglab.com

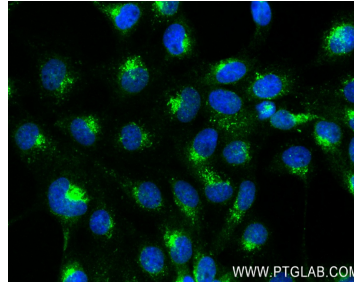
W: ptgcn.com

**This product is exclusively available under Proteintech Group brand and is not available to purchase from any other manufacturer.**

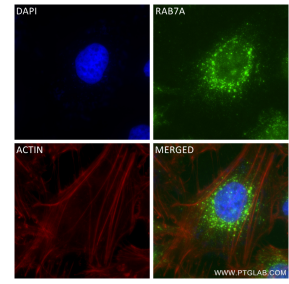
## Selected Validation Data



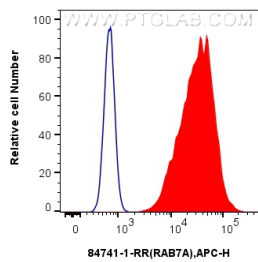
Various lysates were subjected to SDS PAGE followed by western blot with 84741-1-RR (RAB7A antibody) at dilution of 1:10000 incubated at room temperature for 1.5 hours. This data was developed using the same antibody clone with 84741-1-PBS in a different storage buffer formulation.



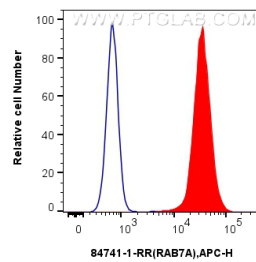
Immunofluorescent analysis of (4% PFA) fixed A431 cells using RAB7A antibody (84741-1-RR, Clone: 241948B4) at dilution of 1:400 and CoraLite®488-Conjugated Goat Anti-Rabbit IgG(H+L) (SA00013-2). This data was developed using the same antibody clone with 84741-1-PBS in a different storage buffer formulation.



Immunofluorescent analysis of (4% PFA) fixed HeLa cells using RAB7A antibody (84741-1-RR, Clone: 241948B4) at dilution of 1:400 and CoraLite®488-Conjugated Goat Anti-Rabbit IgG(H+L) (SA00013-2), CL594-Phalloidin (red). This data was developed using the same antibody clone with 84741-1-PBS in a different storage buffer formulation.



1x10<sup>6</sup> A431 cells were intracellularly stained with 0.25 ug RAB7A Recombinant antibody (84741-1-RR, Clone:241948B4) and APC-Conjugated Goat Anti-Rabbit IgG(H+L) (red), or 0.25 ug Rabbit IgG Isotype Control Recombinant Antibody (98136-1-RR, Clone: 240953C9) (blue). Cells were fixed with 4% PFA and permeabilized with Flow Cytometry Perm Buffer (PF00011-C). This data was developed using the same antibody clone with 84741-1-PBS in a different storage buffer



1x10<sup>6</sup> K-562 cells were intracellularly stained with 0.25 ug RAB7A Recombinant antibody (84741-1-RR, Clone:241948B4) and APC-Conjugated Goat Anti-Rabbit IgG(H+L) (red), or 0.25 ug Rabbit IgG Isotype Control Recombinant Antibody (98136-1-RR, Clone: 240953C9) (blue). Cells were fixed with 4% PFA and permeabilized with Flow Cytometry Perm Buffer (PF00011-C). This data was developed using the same antibody clone with 84741-1-PBS in a different storage buffer