

For Research Use Only

# CLEC10A Recombinant antibody, PBS Only

Catalog Number: 84748-1-PBS



## Basic Information

Catalog Number:

84748-1-PBS

Size:

1 mg/ml

Source:

Rabbit

Isotype:

IgG

GenBank Accession Number:

BC039011

GeneID (NCBI):

10462

UNIPROT ID:

Q8IUUN9

Full Name:

C-type lectin domain family 10, member A

Calculated MW:

316 aa, 35 kDa

Observed MW:

35 kDa

Purification Method:

Protein A purification

CloneNo.:

241857C3

## Applications

Tested Applications:

WB, Indirect ELISA

Species Specificity:

human, mouse

## Background Information

### Storage

Storage:

Store at -80°C.

**The product is shipped with ice packs. Upon receipt, store it immediately at -80°C**

Storage Buffer:

PBS Only

For technical support and original validation data for this product please contact:

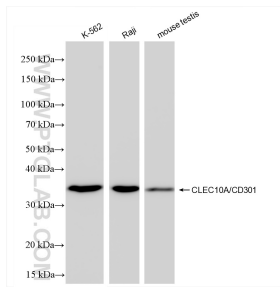
T: 4006900926

E: Proteintech-CN@ptglab.com

W: ptgcn.com

**This product is exclusively available under Proteintech Group brand and is not available to purchase from any other manufacturer.**

## Selected Validation Data



Various lysates were subjected to SDS PAGE followed by western blot with 84748-1-RR (CLEC10A antibody) at dilution of 1:8000 incubated at room temperature for 1.5 hours. This data was developed using the same antibody clone with 84748-1-PBS in a different storage buffer formulation.