

For Research Use Only

# CLEC10A Recombinant antibody

Catalog Number: 84748-1-RR



## Basic Information

Catalog Number:

84748-1-RR

Size:

1000 µg/ml

Source:

Rabbit

Isotype:

IgG

GenBank Accession Number:

BC039011

GeneID (NCBI):

10462

UNIPROT ID:

Q8IUN9

Full Name:

C-type lectin domain family 10, member A

Calculated MW:

316 aa, 35 kDa

Observed MW:

35 kDa

Purification Method:

Protein A purification

CloneNo.:

241857C3

Recommended Dilutions:

WB 1:2000-1:16000

## Applications

Tested Applications:

WB, ELISA

Species Specificity:

human, mouse

Positive Controls:

WB : K-562 cells, Raji cells, mouse testis tissue

## Background Information

### Storage

Storage:

Store at -20°C. Stable for one year after shipment.

Storage Buffer:

PBS with 0.02% sodium azide and 50% glycerol pH 7.3.

Aliquoting is unnecessary for -20°C storage

For technical support and original validation data for this product please contact:

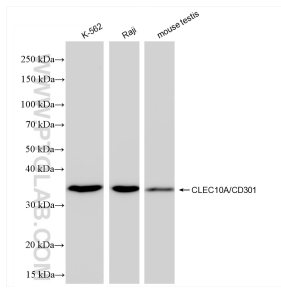
T: 4006900926

E: [Proteintech-CN@ptglab.com](mailto:Proteintech-CN@ptglab.com)

W: [ptgcn.com](http://ptgcn.com)

This product is exclusively available under Proteintech Group brand and is not available to purchase from any other manufacturer.

## Selected Validation Data



Various lysates were subjected to SDS PAGE followed by western blot with 84748-1-RR (CLEC10A antibody) at dilution of 1:8000 incubated at room temperature for 1.5 hours.