

For Research Use Only

# RB1CC1 Recombinant antibody

Catalog Number: 84757-3-RR



## Basic Information

Catalog Number:

84757-3-RR

Size:

1000 ug/ml

Source:

Rabbit

Isotype:

IgG

Immunogen Catalog Number:

AG10508

GenBank Accession Number:

BC017556

GeneID (NCBI):

9821

UNIPROT ID:

Q8TDY2

Full Name:

RB1-inducible coiled-coil 1

Calculated MW:

1594 aa, 183 kDa

Observed MW:

220 kDa

Purification Method:

Protein A purification

CloneNo.:

242204D6

Recommended Dilutions:

WB 1:2000-1:10000

IF/ICC 1:200-1:800

## Applications

Tested Applications:

WB, IF/ICC, ELISA

Species Specificity:

human, mouse, rat

Positive Controls:

WB : HeLa cells, A549 cells, HepG2 cells, Jurkat cells, K-562 cells, HSC-T6 cells, NIH/3T3 cells

IF/ICC : HeLa cells,

## Background Information

RB1CC1, also named as RBICC, is implicated in the regulation of RB1 expression and functions as a DNA-binding transcription factor. It is a potent regulator of the RB1 pathway and a mediator that plays a crucial role in muscular differentiation. Its expression is, thus, a prerequisite for myogenic differentiation. Involved in autophagy. RB1CC1 is required for autophagosome formation. It is probably involved in the tumorigenesis of breast cancer. RB1CC1 is frequently mutated in breast cancer and shows characteristics of a classical tumor suppressor gene.

## Storage

Storage:

Store at -20°C. Stable for one year after shipment.

Storage Buffer:

PBS with 0.02% sodium azide and 50% glycerol pH 7.3.

Aliquoting is unnecessary for -20°C storage

For technical support and original validation data for this product please contact:

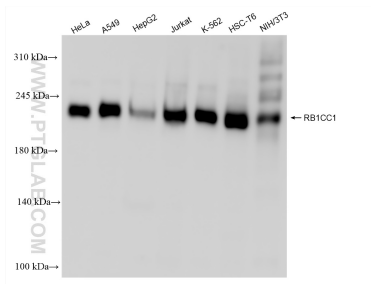
T: 4006900926

E: [Proteintech-CN@ptglab.com](mailto:Proteintech-CN@ptglab.com)

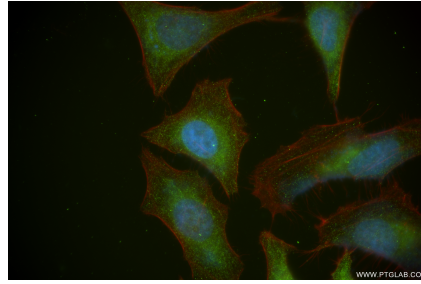
W: [ptgcn.com](http://ptgcn.com)

**This product is exclusively available under Proteintech Group brand and is not available to purchase from any other manufacturer.**

## Selected Validation Data



Various lysates were subjected to SDS PAGE followed by western blot with 84757-3-RR (RB1CC1 antibody) at dilution of 1:5000 incubated at room temperature for 1.5 hours.



Immunofluorescent analysis of (4% PFA) fixed HeLa cells using RB1CC1 antibody (84757-3-RR, Clone: 242204D6) at dilution of 1:400 and CoraLite® 488-Conjugated Goat Anti-Rabbit IgG(H+L) (SA00013-2), CL594-Phalloidin (red).