

For Research Use Only

# RB1CC1 Recombinant antibody

Catalog Number: 84757-4-RR



## Basic Information

<b>Catalog Number:</b> 84757-4-RR	<b>GenBank Accession Number:</b> BC017556	<b>Purification Method:</b> Protein A purification
<b>Size:</b> 1000 µg/ml	<b>GeneID (NCBI):</b> 9821	<b>CloneNo.:</b> 242204C1
<b>Source:</b> Rabbit	<b>UNIPROT ID:</b> Q8TDY2	<b>Recommended Dilutions:</b> WB 1:2000-1:10000
<b>Isotype:</b> IgG	<b>Full Name:</b> RB1-inducible coiled-coil 1	
<b>Immunogen Catalog Number:</b> AG10508	<b>Calculated MW:</b> 1594 aa, 183 kDa	
	<b>Observed MW:</b> 220 kDa	

## Applications

**Tested Applications:**  
WB, ELISA

**Species Specificity:**  
human, mouse, rat

**Positive Controls:**  
WB : HeLa cells, A549 cells, HepG2 cells, Jurkat cells, K-562 cells, NIH/3T3 cells, HSC-T6 cells

## Background Information

RB1CC1, also named as RBICC, is implicated in the regulation of RB1 expression and functions as a DNA-binding transcription factor. It is a potent regulator of the RB1 pathway and a mediator that plays a crucial role in muscular differentiation. Its expression is, thus, a prerequisite for myogenic differentiation. Involved in autophagy. RB1CC1 is required for autophagosome formation. It is probably involved in the tumorigenesis of breast cancer. RB1CC1 is frequently mutated in breast cancer and shows characteristics of a classical tumor suppressor gene.

## Storage

**Storage:**  
Store at -20°C. Stable for one year after shipment.

**Storage Buffer:**  
PBS with 0.02% sodium azide and 50% glycerol pH 7.3.

Aliquoting is unnecessary for -20°C storage

For technical support and original validation data for this product please contact:

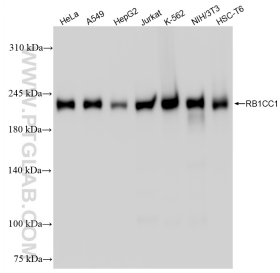
T: 4006900926

E: [Proteintech-CN@ptglab.com](mailto:Proteintech-CN@ptglab.com)

W: [ptgcn.com](http://ptgcn.com)

**This product is exclusively available under Proteintech Group brand and is not available to purchase from any other manufacturer.**

## Selected Validation Data



Various lysates were subjected to SDS PAGE followed by western blot with 84757-4-RR (RB1CC1 antibody) at dilution of 1:5000 incubated at room temperature for 1.5 hours.