

For Research Use Only

# CLIC3 Recombinant antibody

Catalog Number: 84759-4-RR



## Basic Information

<b>Catalog Number:</b> 84759-4-RR	<b>GenBank Accession Number:</b> BC007012	<b>Purification Method:</b> Protein A purification
<b>Size:</b> 1000 µg/ml	<b>GeneID (NCBI):</b> 9022	<b>CloneNo.:</b> 242326H7
<b>Source:</b> Rabbit	<b>UNIPROT ID:</b> O95833	<b>Recommended Dilutions:</b> WB 1:5000-1:50000 IF/ICC 1:50-1:500
<b>Isotype:</b> IgG	<b>Full Name:</b> chloride intracellular channel 3	
<b>Immunogen Catalog Number:</b> AG8757	<b>Calculated MW:</b> 236 aa, 26 kDa	
	<b>Observed MW:</b> 27-32 kDa	

## Applications

<b>Tested Applications:</b> WB, IF/ICC, ELISA	<b>Positive Controls:</b> WB : JAR cells, HeLa cells
<b>Species Specificity:</b> human	<b>IF/ICC :</b> A431 cells,

## Background Information

Chloride channels are a diverse group of proteins that regulate fundamental cellular processes including stabilization of cell membrane potential, transepithelial transport, maintenance of intracellular pH, and regulation of cell volume (PMID: 9880541). CLIC3 (chloride intracellular channel protein 3) belongs to the chloride channel CLIC family which has seven members based on sequence homology to the p64 chloride channels of bovine kidney microsomes. CLIC proteins lack the membrane-spanning domains characteristic of channel proteins and are largely intracellular. CLIC3 is predominantly localized in the nucleus and has a high expression level in placenta (PMID: 9880541; 17027078). It associates with the C-terminal of ERK7 and may participate in cellular growth control.

## Storage

**Storage:**  
Store at -20°C. Stable for one year after shipment.  
**Storage Buffer:**  
PBS with 0.02% sodium azide and 50% glycerol pH 7.3.  
Aliquoting is unnecessary for -20°C storage

For technical support and original validation data for this product please contact:

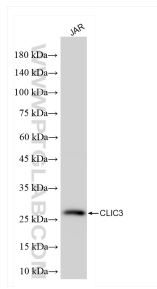
T: 4006900926

E: Proteintech-CN@ptglab.com

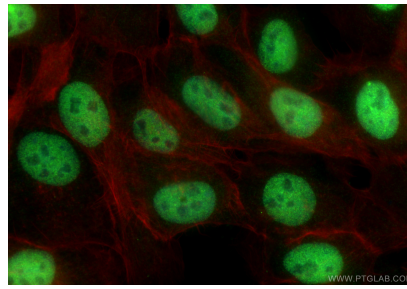
W: ptgcn.com

**This product is exclusively available under Proteintech Group brand and is not available to purchase from any other manufacturer.**

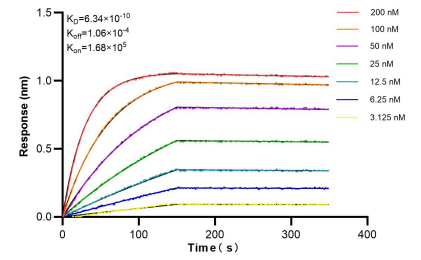
## Selected Validation Data



JAR cells were subjected to SDS PAGE followed by western blot with 84759-4-RR (CLIC3 antibody) at dilution of 1:10000 incubated at room temperature for 1.5 hours.



Immunofluorescent analysis of (4% PFA) fixed A431 cells using CLIC3 antibody (84759-4-RR, Clone: 242326H7 ) at dilution of 1:200 and CoraLite®488-Conjugated Goat Anti-Rabbit IgG(H+L) (SA00013-2), CL594-Phalloidin (red).



Bi-layer interferometry (BLI) kinetic assays of 84759-4-RR against Human CLIC3 were performed. The affinity constant is 0.634 nM.