

For Research Use Only

APOE Recombinant antibody, PBS Only (Detector)

Catalog Number: 84775-4-PBS



Basic Information

Catalog Number: 84775-4-PBS	GenBank Accession Number: BC003557	Purification Method: Protein A purification
Size: 1 mg/ml	GeneID (NCBI): 348	CloneNo.: 242310A3
Source: Rabbit	UNIPROT ID: P02649	
Isotype: IgG	Full Name: Apolipoprotein E	
	Calculated MW: 36 kDa	

Applications

Tested Applications:
Sandwich ELISA, Indirect ELISA, Sample test

Species Specificity:
human

Background Information

Storage

Storage:
Store at -80°C.
The product is shipped with ice packs. Upon receipt, store it immediately at -80°C

Storage Buffer:
PBS Only

For technical support and original validation data for this product please contact:

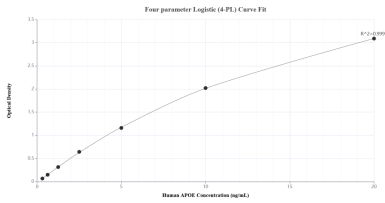
T: 4006900926

E: Proteintech-CN@ptglab.com

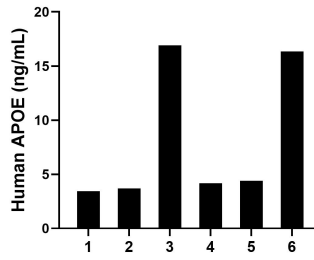
W: ptgcn.com

This product is exclusively available under Proteintech Group brand and is not available to purchase from any other manufacturer.

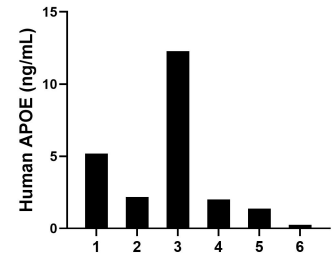
Selected Validation Data



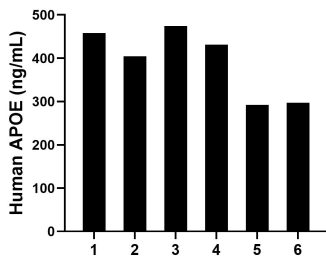
Sandwich ELISA standard curve of MP01558-3, Human APOE Recombinant Matched Antibody Pair - PBS only. 84775-5-PBS was coated to a plate as the capture antibody and incubated with serial dilutions of standard Eg0448. 84775-4-PBS was HRP conjugated as the detection antibody. Range: 0.313-10 ng/mL



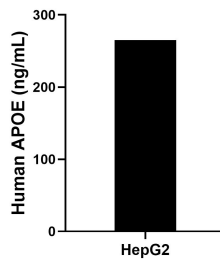
Saliva of six individual healthy human donors was measured. The APOE concentration of detected samples was determined to be 8.16 ng/mL with a range of 3.43-16.91 ng/mL



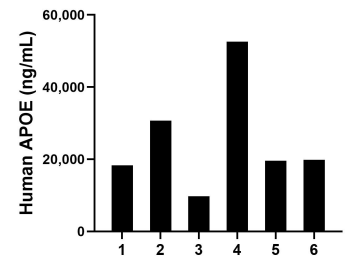
Urine of six individual healthy human donors was measured. The APOE concentration of detected samples was determined to be 3.88 ng/mL with a range of 0.26-12.28 ng/mL



Human milk of six individual healthy human donors was measured. The APOE concentration of detected samples was determined to be 392.90 ng/mL with a range of 291.94-474.33 ng/mL



HepG2 were cultured in DMEM supplemented with 10% fetal bovine serum, 2.5 mM L-glutamine, 100 U/mL penicillin, and 100 µg/mL streptomycin sulfate. An aliquot of the cell culture supernate was removed, assayed for human APOE, and measured 264.90 ng/mL



Serum of six individual healthy human donors was measured. The APOE concentration of detected samples was determined to be 25,140.92 ng/mL with a range of 9,706.32-52,603.90 ng/mL