

For Research Use Only

APOE Recombinant antibody, PBS Only (Capture)

Catalog Number: 84775-5-PBS



Basic Information

Catalog Number:

84775-5-PBS

Size:

1 mg/ml

Source:

Rabbit

Isotype:

IgG

GenBank Accession Number:

BC003557

GeneID (NCBI):

348

UNIPROT ID:

P02649

Full Name:

Apolipoprotein E

Calculated MW:

36 kDa

Purification Method:

Protein A purification

CloneNo.:

242310B5

Applications

Tested Applications:

Sandwich ELISA, Indirect ELISA, Sample test

Species Specificity:

human

Background Information

Storage

Storage:

Store at -80°C.

The product is shipped with ice packs. Upon receipt, store it immediately at -80°C

Storage Buffer:

PBS Only

For technical support and original validation data for this product please contact:

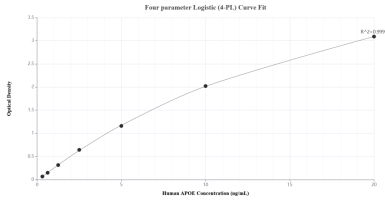
T: 4006900926

E: Proteintech-CN@ptglab.com

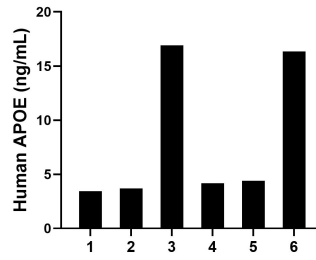
W: ptgcn.com

This product is exclusively available under Proteintech Group brand and is not available to purchase from any other manufacturer.

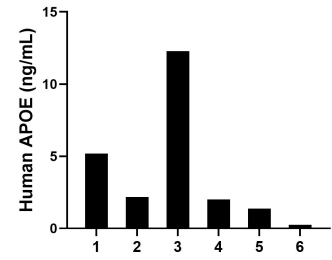
Selected Validation Data



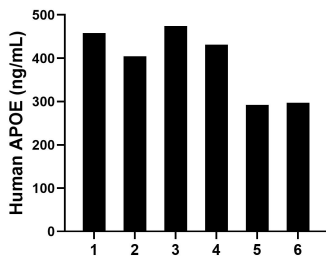
Sandwich ELISA standard curve of MP01558-3, Human APOE Recombinant Matched Antibody Pair - PBS only. 84775-5-PBS was coated to a plate as the capture antibody and incubated with serial dilutions of standard Eg0448. 84775-4-PBS was HRP conjugated as the detection antibody. Range: 0.313-10 ng/mL



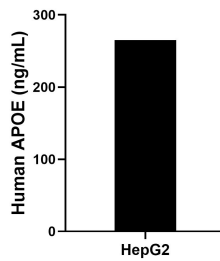
Saliva of six individual healthy human donors was measured. The APOE concentration of detected samples was determined to be 8.16 ng/mL with a range of 3.43-16.91 ng/mL



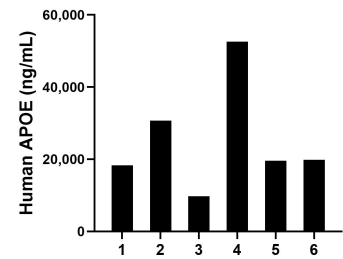
Urine of six individual healthy human donors was measured. The APOE concentration of detected samples was determined to be 3.88 ng/mL with a range of 0.26-12.28 ng/mL



Human milk of six individual healthy human donors was measured. The APOE concentration of detected samples was determined to be 392.90 ng/mL with a range of 291.94-474.33 ng/mL



HepG2 were cultured in DMEM supplemented with 10% fetal bovine serum, 2.5 mM L-glutamine, 100 U/mL penicillin, and 100 µg/mL streptomycin sulfate. An aliquot of the cell culture supernate was removed, assayed for human APOE, and measured 264.90 ng/mL



Serum of six individual healthy human donors was measured. The APOE concentration of detected samples was determined to be 25,140.92 ng/mL with a range of 9,706.32-52,603.90 ng/mL