

For Research Use Only

# RAB21 Recombinant antibody, PBS Only (Detector)

Catalog Number: 84776-2-PBS



## Basic Information

<b>Catalog Number:</b> 84776-2-PBS	<b>GenBank Accession Number:</b> NM_014999	<b>Purification Method:</b> Protein A purification
<b>Size:</b> 1 mg/ml	<b>GeneID (NCBI):</b> 23011	<b>CloneNo.:</b> 242117C4
<b>Source:</b> Rabbit	<b>UNIPROT ID:</b> Q9UL25	
<b>Isotype:</b> IgG	<b>Full Name:</b> RAB21, member RAS oncogene family	
<b>Immunogen Catalog Number:</b> AG35291	<b>Calculated MW:</b> 24 kDa	
	<b>Observed MW:</b> 24 kDa	

## Applications

**Tested Applications:**  
WB, IHC, IF/ICC, Cytometric bead array, Indirect ELISA

**Species Specificity:**  
human, mouse, rat

## Background Information

Small GTPase Rab21 is a ubiquitously expressed and has recently been shown to associate with the  $\alpha$  tails of several integrins via the shared conserved membrane proximal sequence, thus regulating cell adhesion and migration via controlling the endo/exocytic trafficking of most integrin heterodimers (PMID: 18804435). Rab21 is required for the pruning of the immature neurites during the multipolar-to-bipolar transition (PMID: 36683567). Knock down of Rab21 impairs integrin-mediated cell adhesion and motility, whereas its overexpression stimulates cell migration and cancer cell adhesion to collagen and human bone (PMID: 16754960).

## Storage

**Storage:**  
Store at -80°C.  
**The product is shipped with ice packs. Upon receipt, store it immediately at -80°C**

**Storage Buffer:**  
PBS Only

For technical support and original validation data for this product please contact:

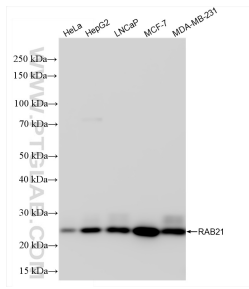
T: 4006900926

E: [Proteintech-CN@ptglab.com](mailto:Proteintech-CN@ptglab.com)

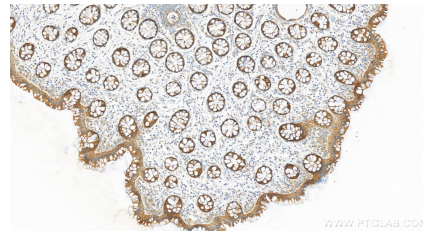
W: [ptgcn.com](http://ptgcn.com)

**This product is exclusively available under Proteintech Group brand and is not available to purchase from any other manufacturer.**

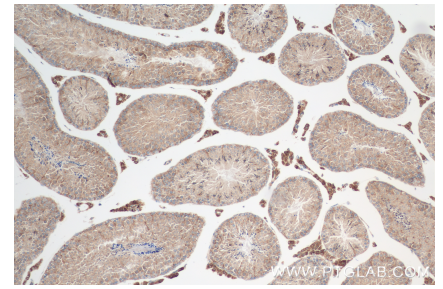
## Selected Validation Data



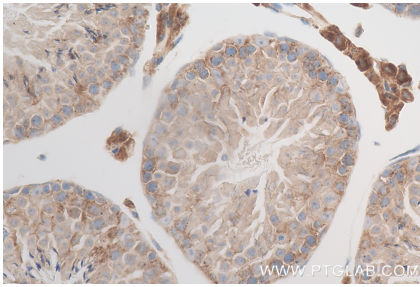
Various lysates were subjected to SDS PAGE followed by western blot with 84776-2-RR (RAB21 antibody) at dilution of 1:2000 incubated at room temperature for 1.5 hours. This data was developed using the same antibody clone with 84776-2-PBS in a different storage buffer formulation.



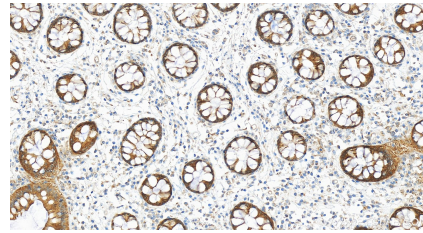
Immunohistochemical analysis of paraffin-embedded human colon tissue slide using 84776-2-RR (RAB21 antibody) at dilution of 1:400 (under 10x lens). Heat mediated antigen retrieval with Tris-EDTA buffer (pH 9.0). This data was developed using the same antibody clone with 84776-2-PBS in a different storage buffer formulation.



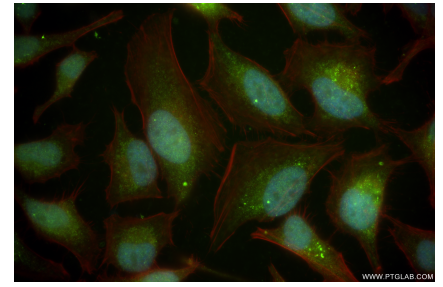
Immunohistochemical analysis of paraffin-embedded mouse testis tissue slide using 84776-2-RR (RAB21 antibody) at dilution of 1:400 (under 10x lens). Heat mediated antigen retrieval with Tris-EDTA buffer (pH 9.0). This data was developed using the same antibody clone with 84776-2-PBS in a different storage buffer formulation.



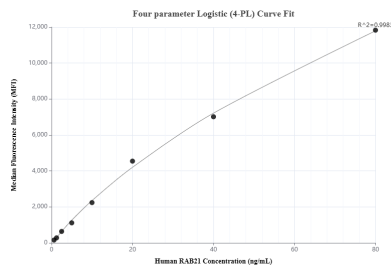
Immunohistochemical analysis of paraffin-embedded mouse testis tissue slide using 84776-2-RR (RAB21 antibody) at dilution of 1:400 (under 40x lens). Heat mediated antigen retrieval with Tris-EDTA buffer (pH 9.0). This data was developed using the same antibody clone with 84776-2-PBS in a different storage buffer formulation.



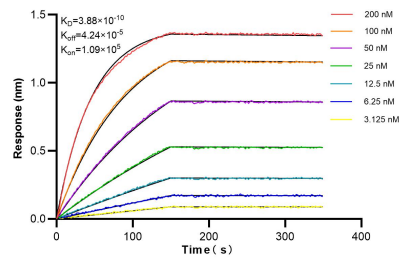
Immunohistochemical analysis of paraffin-embedded human colon tissue slide using 84776-2-RR (RAB21 antibody) at dilution of 1:400 (under 20x lens). Heat mediated antigen retrieval with Tris-EDTA buffer (pH 9.0). This data was developed using the same antibody clone with 84776-2-PBS in a different storage buffer formulation.



Immunofluorescent analysis of (4% PFA) fixed HeLa cells using RAB21 antibody (84776-2-RR, Clone: 242117C4) at dilution of 1:250 and CoraLite@488-Conjugated Goat Anti-Rabbit IgG(H+L) (SA00013-2), CL594-Phalloidin (red). This data was developed using the same antibody clone with 84776-2-PBS in a different storage buffer formulation.



Cytometric bead array standard curve of MP01552-2, RAB21 Recombinant Matched Antibody Pair, PBS Only. Capture antibody: 84776-1-PBS. Detection antibody: 84776-2-PBS. Standard: Ag35291. Range: 0.625-80 ng/mL.



Bi-layer interferometry (BLI) kinetic assays of 84776-2-RR against Human RAB21 were performed. The affinity constant is 0.388 nM.