

# RAB21 Recombinant antibody

Catalog Number: 84776-2-RR

## Basic Information

Catalog Number: 84776-2-RR	GenBank Accession Number: NM_014999	Purification Method: Protein A purification
Size: 1000 µg/ml	GeneID (NCBI): 23011	CloneNo.: 242117C4
Source: Rabbit	UNIPROT ID: Q9UL25	Recommended Dilutions: WB 1:1000-1:4000 IHC 1:200-1:800 IF/ICC 1:125-1:500
Isotype: IgG	Full Name: RAB21, member RAS oncogene family	
Immunogen Catalog Number: AG35291	Calculated MW: 24 kDa	
	Observed MW: 24 kDa	

## Applications

Tested Applications:  
WB, IHC, IF/ICC, ELISA

Species Specificity:  
human, mouse, rat

**Note-IHC: suggested antigen retrieval with  
TE buffer pH 9.0; (\*) Alternatively, antigen  
retrieval may be performed with citrate  
buffer pH 6.0**

Positive Controls:

WB : HeLa cells, HepG2 cells, LNCaP cells, MCF-7 cells,  
MDA-MB-231 cells

IHC : human colon tissue, mouse testis tissue

IF/ICC : HeLa cells,

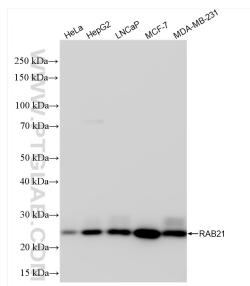
## Background Information

Small GTPase Rab21 is a ubiquitously expressed and has recently been shown to associate with the  $\alpha$  tails of several integrins via the shared conserved membrane proximal sequence, thus regulating cell adhesion and migration via controlling the endo/exocytic trafficking of most integrin heterodimers (PMID: 18804435). Rab21 is required for the pruning of the immature neurites during the multipolar-to-bipolar transition (PMID: 36683567). Knock down of Rab21 impairs integrin-mediated cell adhesion and motility, whereas its overexpression stimulates cell migration and cancer cell adhesion to collagen and human bone (PMID: 16754960).

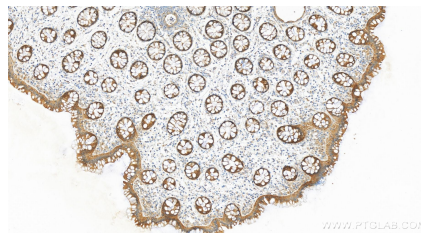
## Storage

Storage:  
Store at -20°C. Stable for one year after shipment.  
Storage Buffer:  
PBS with 0.02% sodium azide and 50% glycerol pH 7.3.  
Aliquoting is unnecessary for -20°C storage

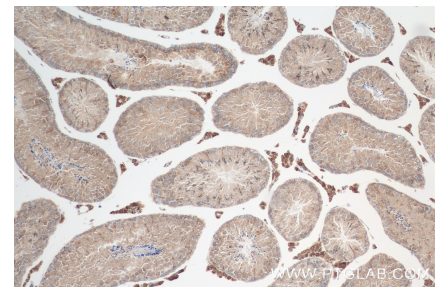
## Selected Validation Data



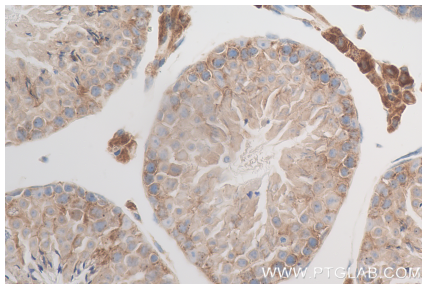
Various lysates were subjected to SDS PAGE followed by western blot with 84776-2-RR (RAB21 antibody) at dilution of 1:2000 incubated at room temperature for 1.5 hours.



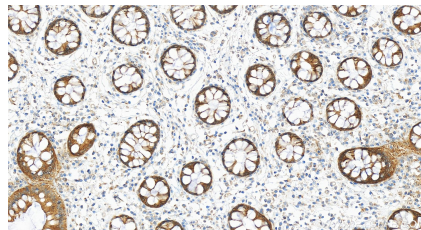
Immunohistochemical analysis of paraffin-embedded human colon tissue slide using 84776-2-RR (RAB21 antibody) at dilution of 1:400 (under 10x lens). Heat mediated antigen retrieval with Tris-EDTA buffer (pH 9.0).



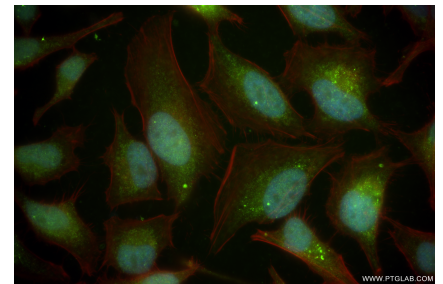
Immunohistochemical analysis of paraffin-embedded mouse testis tissue slide using 84776-2-RR (RAB21 antibody) at dilution of 1:400 (under 10x lens). Heat mediated antigen retrieval with Tris-EDTA buffer (pH 9.0).



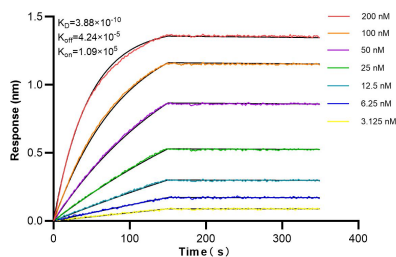
Immunohistochemical analysis of paraffin-embedded mouse testis tissue slide using 84776-2-RR (RAB21 antibody) at dilution of 1:400 (under 40x lens). Heat mediated antigen retrieval with Tris-EDTA buffer (pH 9.0).



Immunohistochemical analysis of paraffin-embedded human colon tissue slide using 84776-2-RR (RAB21 antibody) at dilution of 1:400 (under 20x lens). Heat mediated antigen retrieval with Tris-EDTA buffer (pH 9.0).



Immunofluorescent analysis of (4% PFA) fixed HeLa cells using RAB21 antibody (84776-2-RR, Clone: 242117C4) at dilution of 1:250 and CoraLite®488-Conjugated Goat Anti-Rabbit IgG(H+L) (SA00013-2), CL594-Phalloidin (red).



Biolayer interferometry (BLI) kinetic assays of 84776-2-RR against Human RAB21 were performed. The affinity constant is 0.388 nM.