

For Research Use Only

RAB21 Recombinant antibody, PBS Only (Detector)

Catalog Number: 84776-4-PBS



Basic Information

Catalog Number:

84776-4-PBS

Size:

1 mg/ml

Source:

Rabbit

Isotype:

IgG

Immunogen Catalog Number:

AG35291

GenBank Accession Number:

NM_014999

GeneID (NCBI):

23011

UNIPROT ID:

Q9UL25

Full Name:

RAB21, member RAS oncogene family

Calculated MW:

24 kDa

Purification Method:

Protein A purification

CloneNo.:

242117E9

Applications

Tested Applications:

Cytometric bead array, Sandwich ELISA, Indirect ELISA,
Sample test

Species Specificity:

human

Background Information

Storage

Storage:

Store at -80°C.

The product is shipped with ice packs. Upon receipt, store it immediately at -80°C

Storage Buffer:

PBS Only

For technical support and original validation data for this product please contact:

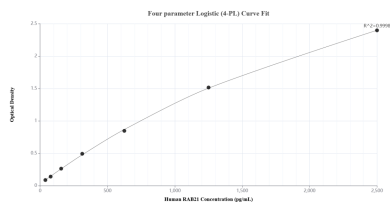
T: 4006900926

E: Proteintech-CN@ptglab.com

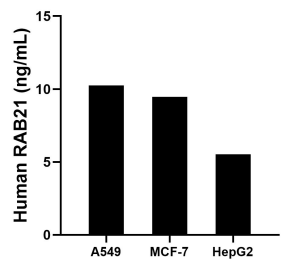
W: ptgcn.com

This product is exclusively available under Proteintech Group brand and is not available to purchase from any other manufacturer.

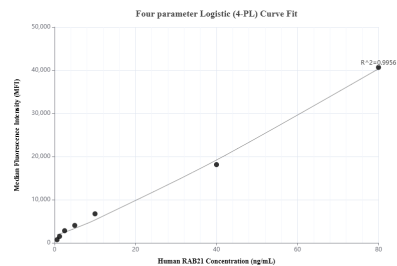
Selected Validation Data



Sandwich ELISA standard curve of MP01552-1, Human RAB21 Recombinant Matched Antibody Pair - PBS only. 84776-3-PBS was coated to a plate as the capture antibody and incubated with serial dilutions of standard Ag35291. 84776-4-PBS was HRP conjugated as the detection antibody. Range: 39.1-2500 pg/mL.



The mean RAB21 concentration was determined to be 10.3 ng/mL in A549 cell extract based on a 2.5 mg/mL extract load, 9.5 ng/mL in MCF-7 cell extract based on a 1.2 mg/mL extract load and 5.5 ng/mL in HepG2 cell extract based on a 2.3 mg/mL extract load.



Cytometric bead array standard curve of MP01552-1, RAB21 Recombinant Matched Antibody Pair, PBS Only. Capture antibody: 84776-3-PBS. Detection antibody: 84776-4-PBS. Standard: Ag35291. Range: 0.625-80 ng/mL.