

For Research Use Only

LRRFIP1 Recombinant antibody

Catalog Number: 84778-2-RR



Basic Information

Catalog Number:

84778-2-RR

Size:

1000 µg/ml

Source:

Rabbit

Isotype:

IgG

Immunogen Catalog Number:

AG34760

GenBank Accession Number:

BC108914

GeneID (NCBI):

9208

UNIPROT ID:

Q32MZ4

Full Name:

leucine rich repeat (in FLII)
interacting protein 1

Observed MW:

150-170 kDa

Purification Method:

Protein A purification

CloneNo.:

242161F10

Recommended Dilutions:

WB 1:5000-1:50000

Applications

Tested Applications:

WB, ELISA

Species Specificity:

human

Positive Controls:

WB: A549 cells, Raji cells, HEK-293 cells, COLO 320 cells, HL-60 cells

Background Information

LRRFIP1 is a transcriptional repressor which preferentially binds to the GC-rich consensus sequence (5'-AGCCCCGGCG-3') and may regulate expression of TNF, EGFR and PDGFA. The endogenous LRRFIP1/GCF2 proteins in several human cell lines, the one expressed from LRRFIP1/GCF2 cDNA in reticulolysates, and the recombinant LRRFIP1/GCF2 protein produced in bacteria have migrated as a band with a molecular weight (MW) of 160 kDa in sodium dodecyl sulfate-polyacrylamide gel electrophoresis (SDS-PAGE).

Storage

Storage:

Store at -20°C. Stable for one year after shipment.

Storage Buffer:

PBS with 0.02% sodium azide and 50% glycerol pH 7.3.

Aliquoting is unnecessary for -20°C storage

For technical support and original validation data for this product please contact:

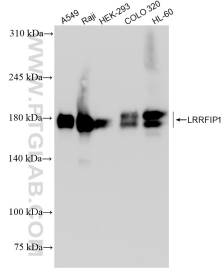
T: 4006900926

E: Proteintech-CN@ptglab.com

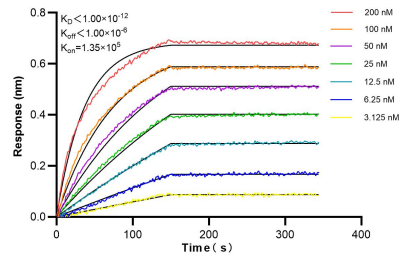
W: ptgcn.com

This product is exclusively available under Proteintech Group brand and is not available to purchase from any other manufacturer.

Selected Validation Data



Various lysates were subjected to SDS PAGE followed by western blot with 84778-2-RR (LRRFIP1 antibody) at dilution of 1:10000 incubated at room temperature for 1.5 hours.



Biolayer interferometry (BLI) kinetic assays of 84778-2-RR against Human LRRFIP1 were performed. The affinity constant is below 1 pM.