

For Research Use Only

# Rat IGF1 Recombinant antibody, PBS Only (Capture)

Catalog Number:84782-6-PBS



## Basic Information

<b>Catalog Number:</b> 84782-6-PBS	<b>GenBank Accession Number:</b> AAA41386	<b>Purification Method:</b> Protein A purification
<b>Concentration:</b> 1 mg/ml	<b>GeneID (NCBI):</b> 24482	<b>CloneNo.:</b> 241890G4
<b>Source:</b> Rabbit	<b>UNIPROT ID:</b> P08025	
<b>Isotype:</b> IgG	<b>Full Name:</b> insulin-like growth factor 1	
<b>Immunogen Catalog Number:</b> EG1976	<b>Calculated MW:</b> 14kd	

## Applications

**Tested Applications:**  
Sandwich ELISA, Indirect ELISA, Sample test

**Species Specificity:**  
rat

## Background Information

### Storage

**Storage:**  
Store at -80°C.  
**The product is shipped with ice packs. Upon receipt, store it immediately at -80°C**

**Storage Buffer:**  
PBS only, pH7.3

For technical support and original validation data for this product please contact:

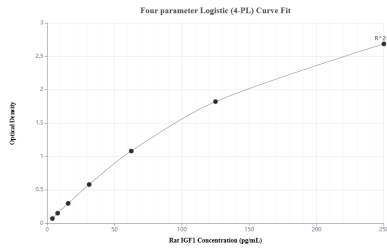
T: 4006900926

E: [Proteintech-CN@ptglab.com](mailto:Proteintech-CN@ptglab.com)

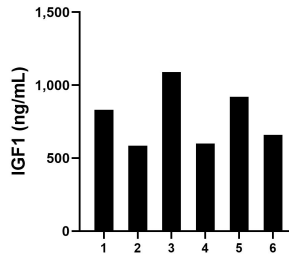
W: [ptgcn.com](http://ptgcn.com)

**This product is exclusively available under Proteintech Group brand and is not available to purchase from any other manufacturer.**

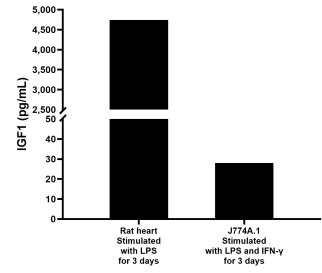
## Selected Validation Data



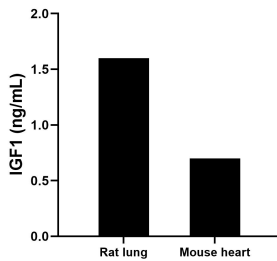
Sandwich ELISA standard curve of MP01547-3, Rat IGF1 Recombinant Matched Antibody Pair - PBS only. 84782-6-PBS was coated to a plate as the capture antibody and incubated with serial dilutions of standard Eg1976. 84782-1-PBS was HRP conjugated as the detection antibody. Range: 3.91-250 pg/mL



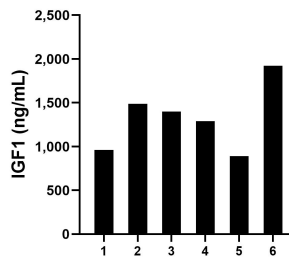
Serum of six mice was measured. The IGF1 concentration of detected samples was determined to be 780.6 pg/mL with a range of 585.0 - 1,089.6 ng/mL



Rat heart tissue (chopped in 1-2 mm pieces in 30 mL of medium) was cultured for 3 days in RPMI supplemented with 10% fetal calf serum and 50 μM β-mercaptoethanol and stimulated with 2.5 ng/mL LPS. J774.A1 cells (1 x 10<sup>6</sup> cells/mL) were cultured in DMEM supplemented with 10% fetal bovine serum, 20 ng/mL IFN-γ, and 1.0 μg/mL LPS for 3 days. Aliquots of the cell culture supernates were removed, assayed for levels of IGF1, and measured 4,740.2 pg/mL in rat heart cell



Rat lung tissue and mouse heart tissue were rinsed with 1X PBS to remove excess blood, homogenized in 20 mL of 1X PBS and stored overnight at ≤ -20 °C. Homogenates were thawed and centrifuged for 5 minutes at 5000 x g. Homogenates were assayed for IGF1 and measured 1.6 ng/mL in rat lung tissue homogenate based on a 0.3 mg/mL homogenate load, and 0.7 ng/mL in mouse heart tissue homogenate based on a 1.4 mg/mL homogenate load.



Serum of six rats was measured. The IGF1 concentration of detected samples was determined to be 1,325.1 pg/mL with a range of 892.6 - 1,922.3 ng/mL