

For Research Use Only

FGD1 Recombinant antibody, PBS Only (Capture)

Catalog Number: 84783-2-PBS



Basic Information

Catalog Number: 84783-2-PBS	GenBank Accession Number: BC034530	Purification Method: Protein A purification
Size: 1 mg/ml	GeneID (NCBI): 2245	CloneNo.: 242314C3
Source: Rabbit	UNIPROT ID: P98174	
Isotype: IgG	Full Name: FYVE, RhoGEF and PH domain containing 1	
Immunogen Catalog Number: AG3861	Calculated MW: 901 aa, 91 kDa	
	Observed MW: 130 kDa	

Applications

Tested Applications:
WB, Cytometric bead array, Indirect ELISA

Species Specificity:
human

Background Information

FGD1 is also named as FGDY (Faciogenital dysplasia 1 protein), ZFYVE3 (Zinc finger FYVE domain-containing protein 3), Rho/Rac guanine nucleotide exchange factor FGD1 (Rho/Rac GEF), FYVE, RhoGEF and PH domain-containing protein 1. FGD1 activates CDC42, a member of the Ras-like family of Rho- and Rac proteins, by exchanging bound GDP for free GTP. And FGD1 plays a role in regulating the actin cytoskeleton and cell shape. (PMID: 8969170). FGD1 was markedly overexpressed and might be a prognostic biomarker in osteosarcoma patient specimens (PMID: 32194840). FGD1 is specific for the Rho GTPase cell division cycle 42 (CDC42) (PMID: 22854039).

Storage

Storage:
Store at -80°C.
The product is shipped with ice packs. Upon receipt, store it immediately at -80°C

Storage Buffer:
PBS Only

For technical support and original validation data for this product please contact:

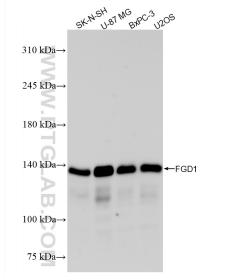
T: 4006900926

E: Proteintech-CN@ptglab.com

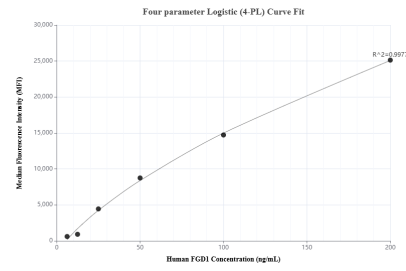
W: ptgcn.com

This product is exclusively available under Proteintech Group brand and is not available to purchase from any other manufacturer.

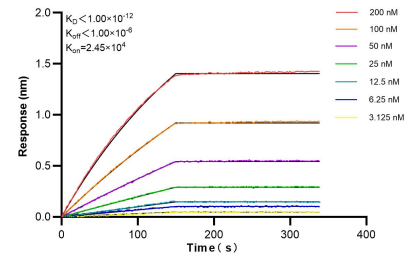
Selected Validation Data



Various lysates were subjected to SDS PAGE followed by western blot with 84783-2-RR (FGD1 antibody) at dilution of 1:10000 incubated at room temperature for 1.5 hours. This data was developed using the same antibody clone with 84783-2-PBS in a different storage buffer formulation.



Cytometric bead array standard curve of MP01538-1, FGD1 Recombinant Matched Antibody Pair, PBS Only. Capture antibody: 84783-2-PBS. Detection antibody: 84783-1-PBS. Standard: Ag3861. Range: 6.25-200 ng/mL.



Bi-layer interferometry (BLI) kinetic assays of 84783-2-RR against Human FGD1 were performed. The affinity constant is below 1 pM.