

For Research Use Only

KLRG1 Recombinant antibody, PBS Only (Detector)

Catalog Number: 84785-1-PBS



Basic Information

Catalog Number: 84785-1-PBS	GenBank Accession Number: NM_005810.4	Purification Method: Protein A purification
Size: 1 mg/ml	GeneID (NCBI): 10219	CloneNo.: 242327D10
Source: Rabbit	UNIPROT ID: Q96E93-1	
Isotype: IgG	Full Name: killer cell lectin-like receptor subfamily G, member 1	
	Calculated MW: 22kDa	

Applications

Tested Applications:
Cytometric bead array, Indirect ELISA

Species Specificity:
human

Background Information

Storage

Storage:
Store at -80°C.
The product is shipped with ice packs. Upon receipt, store it immediately at -80°C

Storage Buffer:
PBS Only

For technical support and original validation data for this product please contact:

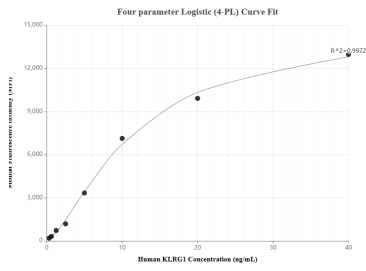
T: 4006900926

E: Proteintech-CN@ptglab.com

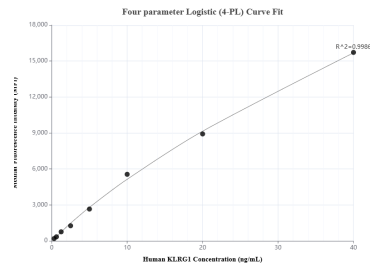
W: ptgcn.com

This product is exclusively available under Proteintech Group brand and is not available to purchase from any other manufacturer.

Selected Validation Data



Cytometric bead array standard curve of MP01549-2, KLRG1 Recombinant Matched Antibody Pair, PBS Only. Capture antibody: 84785-2-PBS. Detection antibody: 84785-1-PBS. Standard: Eg2036. Range: 0.313-40 ng/mL



Cytometric bead array standard curve of MP01549-1, KLRG1 Recombinant Matched Antibody Pair, PBS Only. Capture antibody: 84785-3-PBS. Detection antibody: 84785-1-PBS. Standard: Eg2036. Range: 0.313-40 ng/mL