

For Research Use Only

# ALPPL2 Recombinant antibody

Catalog Number: 84813-1-RR



## Basic Information

<b>Catalog Number:</b> 84813-1-RR	<b>GenBank Accession Number:</b> BC014139	<b>Purification Method:</b> Protein A purification
<b>Size:</b> 1000 µg/ml	<b>GeneID (NCBI):</b> 251	<b>CloneNo.:</b> 241867A12
<b>Source:</b> Rabbit	<b>UNIPROT ID:</b> P10696	<b>Recommended Dilutions:</b> WB 1:5000-1:50000 IHC 1:500-1:2000
<b>Isotype:</b> IgG	<b>Full Name:</b> alkaline phosphatase, placental-like 2	
<b>Immunogen Catalog Number:</b> AG13360	<b>Calculated MW:</b> 57 kDa	
	<b>Observed MW:</b> 70 kDa	

## Applications

### Tested Applications:

WB, IHC, ELISA

### Species Specificity:

human

**Note-IHC: suggested antigen retrieval with TE buffer pH 9.0; (\*) Alternatively, antigen retrieval may be performed with citrate buffer pH 6.0**

### Positive Controls:

WB: human placenta tissue,

IHC: human placenta tissue,

## Background Information

ALPPL2 (alkaline phosphatase placental-like 2), a member of the human alkaline phosphatase family, could be a potential biomarker for early diagnosis of Pancreatic ductal adenocarcinoma.

## Storage

### Storage:

Store at -20°C. Stable for one year after shipment.

### Storage Buffer:

PBS with 0.02% sodium azide and 50% glycerol pH 7.3.

Aliquoting is unnecessary for -20°C storage

For technical support and original validation data for this product please contact:

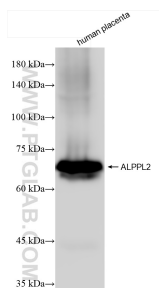
T: 4006900926

E: [Proteintech-CN@ptglab.com](mailto:Proteintech-CN@ptglab.com)

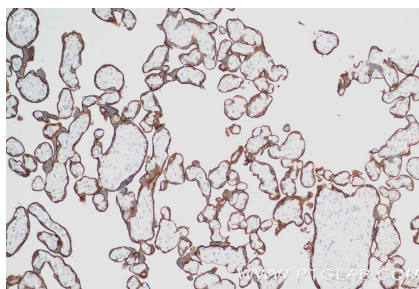
W: [ptgcn.com](http://ptgcn.com)

**This product is exclusively available under Proteintech Group brand and is not available to purchase from any other manufacturer.**

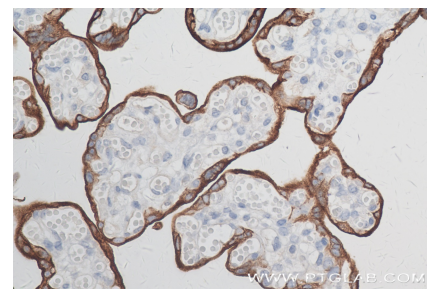
## Selected Validation Data



human placenta tissue were subjected to SDS PAGE followed by western blot with 84813-1-RR (ALPPL2 antibody) at dilution of 1:10000 incubated at room temperature for 1.5 hours.



Immunohistochemical analysis of paraffin-embedded human placenta tissue slide using 84813-1-RR (ALPPL2 antibody) at dilution of 1:1000 (under 10x lens). Heat mediated antigen retrieval with Tris-EDTA buffer (pH 9.0).



Immunohistochemical analysis of paraffin-embedded human placenta tissue slide using 84813-1-RR (ALPPL2 antibody) at dilution of 1:1000 (under 40x lens). Heat mediated antigen retrieval with Tris-EDTA buffer (pH 9.0).