

For Research Use Only

# FceR1a Recombinant antibody

Catalog Number:84816-4-RR



## Basic Information

<b>Catalog Number:</b> 84816-4-RR	<b>GenBank Accession Number:</b> NM_010184.2	<b>Purification Method:</b> Protein A purification
<b>Size:</b> 1000 ug/ml	<b>GeneID (NCBI):</b> 14125	<b>CloneNo.:</b> 242008D7
<b>Source:</b> Rabbit	<b>UNIPROT ID:</b> P20489	<b>Recommended Dilutions:</b> WB 1:5000-1:50000
<b>Isotype:</b> IgG	<b>Full Name:</b> Fc receptor, IgE, high affinity I, alpha polypeptide	
	<b>Calculated MW:</b> 29 kDa	
	<b>Observed MW:</b> 42 kDa	

## Applications

<b>Tested Applications:</b> WB, ELISA	<b>Positive Controls:</b> WB : MC/9 cells,
<b>Species Specificity:</b> mouse	

## Background Information

Fc epsilon Receptor I alpha (FceR1a) is a single-pass type I membrane protein that contains 2 immunoglobulin-like domains. FceR1a forms a tetrameric complex with one beta and two gamma subunits (PMID: 19406478). FceRI is the high-affinity receptor for the Fc region of immunoglobulin E (IgE) (PMID: 1532373). It is expressed on mast cells and basophils and plays a central role in the allergic response (PMID: 2148316).

## Storage

**Storage:**  
Store at -20°C. Stable for one year after shipment.  
**Storage Buffer:**  
PBS with 0.02% sodium azide and 50% glycerol pH 7.3.  
Aliquoting is unnecessary for -20°C storage

For technical support and original validation data for this product please contact:

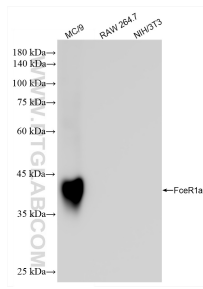
T: 4006900926

E: [Proteintech-CN@ptglab.com](mailto:Proteintech-CN@ptglab.com)

W: [ptgcn.com](http://ptgcn.com)

**This product is exclusively available under Proteintech Group brand and is not available to purchase from any other manufacturer.**

## Selected Validation Data



Various lysates were subjected to SDS PAGE followed by western blot with 84816-4-RR (Fc-epsilon RI-alpha (FcεR1) antibody) at dilution of 1:10000 incubated at room temperature for 1.5 hours.