

For Research Use Only

# CSF3R Recombinant antibody, PBS Only (Capture/Detector)

Catalog Number: 84827-2-PBS



## Basic Information

Catalog Number:

84827-2-PBS

Size:

1 mg/ml

Source:

Rabbit

Isotype:

IgG

GenBank Accession Number:

NM\_000760.3

GeneID (NCBI):

1441

UNIPROT ID:

Q99062-1

Full Name:

colony stimulating factor 3 receptor  
(granulocyte)

Calculated MW:

92 kDa

Purification Method:

Protein A purification

CloneNo.:

242246A5

## Applications

Tested Applications:

Cytometric bead array, Sandwich ELISA, Indirect ELISA,  
Sample test

Species Specificity:

human

## Background Information

### Storage

Storage:

Store at -80°C.

**The product is shipped with ice packs. Upon receipt, store it immediately at -80°C**

Storage Buffer:

PBS Only

For technical support and original validation data for this product please contact:

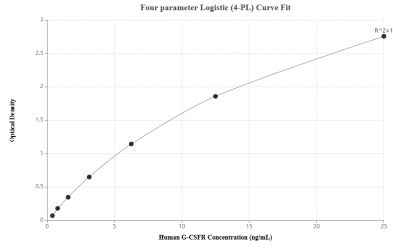
T: 4006900926

E: Proteintech-CN@ptglab.com

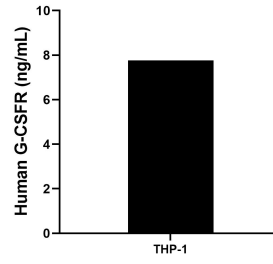
W: ptgcn.com

**This product is exclusively available under Proteintech Group brand and is not available to purchase from any other manufacturer.**

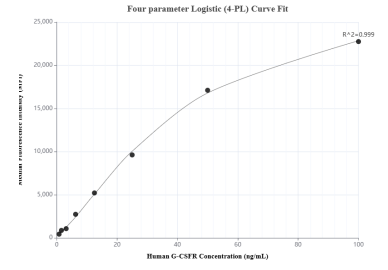
## Selected Validation Data



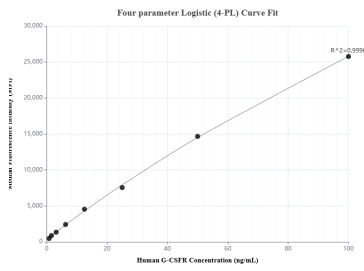
Sandwich ELISA standard curve of MP01609-3, Human G-CSFR Recombinant Matched Antibody Pair - PBS only. 84827-4-PBS was coated to a plate as the capture antibody and incubated with serial dilutions of standard Eg2821. 84827-2-PBS was HRP conjugated as the detection antibody. Range: 0.391-25 ng/mL



The mean G-CSFR concentration was determined to be 7.76 ng/mL in THP-1 cell extract based on a 4.4 mg/mL extract load.



Cytometric bead array standard curve of MP01609-2, G-CSFR Recombinant Matched Antibody Pair, PBS Only. Capture antibody: 84827-2-PBS. Detection antibody: 84827-3-PBS. Standard: Eg2821. Range: 0.781-100 ng/mL



Cytometric bead array standard curve of MP01609-1, G-CSFR Recombinant Matched Antibody Pair, PBS Only. Capture antibody: 84827-1-PBS. Detection antibody: 84827-2-PBS. Standard: Eg2821. Range: 0.781-100 ng/mL