

For Research Use Only

APP Recombinant antibody, PBS Only (Detector)

Catalog Number: 84829-6-PBS



Basic Information

Catalog Number:	GenBank Accession Number:	Purification Method:
84829-6-PBS	NM_000484.3	Protein A purification
Concentration:	GeneID (NCBI):	CloneNo.:
1 mg/ml	351	250546B3
Source:	UNIPROT ID:	
Rabbit	P05067-1	
Isotype:	Full Name:	
IgG	amyloid beta (A4) precursor protein	
Immunogen Catalog Number:	Calculated MW:	
EG3070	87 kDa	
	Observed MW:	
	100 kDa	

Applications

Tested Applications:
WB, IF/ICC, Cytometric bead array, Indirect ELISA, Sample test

Species Specificity:
human, rat

Background Information

A β derives from APP via proteolytic cleavage by proteases called α -, β - and γ -secretase. The α -secretase cleavage precludes the formation of A β , while the β - and γ -cleavages generate APP components with amyloidogenic features. Amyloid beta A4 precursor protein (APP), encoded by APP gene which locate on human chromosome 21q, is a cell surface receptor and performs physiological functions on the surface of neurons relevant to neurite growth, neuronal adhesion and axonogenesis. APP expressed in all fetal tissues and is pronounced in brain, kidney, heart and spleen, but weak in liver. Defects in APP are the cause of Alzheimer disease type 1 (AD1). Amyloid β (A β) precursor protein (APP) is a 100-140 kDa transmembrane glycoprotein that exists as several isoforms. APP can be cleaved into several chains, this antibody could recognize N-terminal fragment of APP (N-APP).

Storage

Storage:
Store at -80°C.
The product is shipped with ice packs. Upon receipt, store it immediately at -80°C

Storage Buffer:
PBS only, pH7.3

For technical support and original validation data for this product please contact:

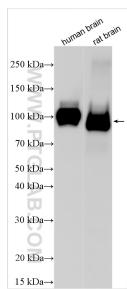
T: 4006900926

E: Proteintech-CN@ptglab.com

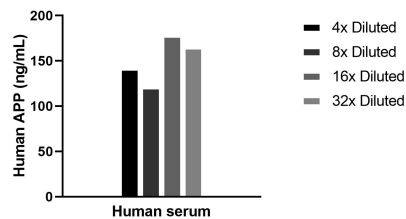
W: ptgcn.com

This product is exclusively available under Proteintech Group brand and is not available to purchase from any other manufacturer.

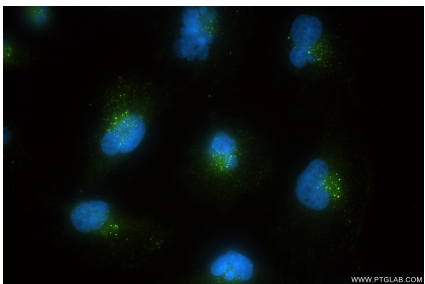
Selected Validation Data



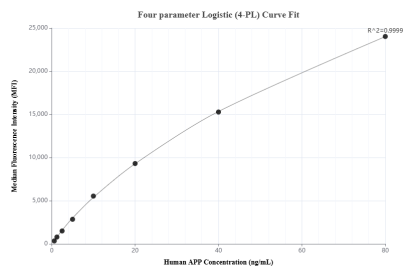
Various lysates were subjected to SDS PAGE followed by western blot with 84829-6-RR (APP antibody) at dilution of 1:10000 incubated at room temperature for 1.5 hours. This data was developed using the same antibody clone with 84829-6-PBS in a different storage buffer formulation.



The mean APP concentration was determined to be 151.0 ng/mL in human serum.



Immunofluorescent analysis of (4% PFA) fixed U-251 cells using APP antibody (84829-6-RR, Clone: 250546B3) at dilution of 1:400 and CoraLite®488-Conjugated Goat Anti-Rabbit IgG(H+L) (SA00013-2). This data was developed using the same antibody clone with 84829-6-PBS in a different storage buffer formulation.



Cytometric bead array standard curve of MP01584-4, APP Recombinant Matched Antibody Pair, PBS Only. Capture antibody: 84829-7-PBS. Detection antibody: 84829-6-PBS. Standard: Eg3070. Range: 0.625-80 ng/mL