

For Research Use Only

Serotonin transporter Recombinant antibody

Catalog Number: 84844-3-RR



Basic Information

Catalog Number:

84844-3-RR

Size:

1000 μ g/ml

Source:

Rabbit

Isotype:

IgG

GenBank Accession Number:

NM_001045

GeneID (NCBI):

6532

UNIPROT ID:

P31645

Full Name:

solute carrier family 6
(neurotransmitter transporter,
serotonin), member 4

Calculated MW:

70 kDa

Observed MW:

70 kDa

Purification Method:

Protein A purification

CloneNo.:

242252B9

Recommended Dilutions:

WB 1:1000-1:6000

Applications

Tested Applications:

WB, ELISA

Species Specificity:

human, mouse

Positive Controls:

WB : mouse brain tissue, unboiled mouse brain tissue

Background Information

Serotonin transporter (SERT; SLC6A4) belongs to the sodium- and chloride-dependent monoamine transporter family. SERT is a membrane transporter that terminates the neurotransmission of serotonin, a monoaminergic neurotransmitter, through its reuptake. The SERT uptake mechanism acquires energy for active transport via ATP hydrolysis or movement against electrochemical gradients. As an oligomeric N-glycan, SERT contains disulfide bonds between cysteine residues on the second extracellular domain. Post-translational modifications regulate the uptake kinetics and membrane trafficking of SERT, partly by regulating the proper folding and assembly of SERT in a host-dependent manner (PMID: 30394319).

Storage

Storage:

Store at -20°C. Stable for one year after shipment.

Storage Buffer:

PBS with 0.02% sodium azide and 50% glycerol pH 7.3.

Aliquoting is unnecessary for -20°C storage

For technical support and original validation data for this product please contact:

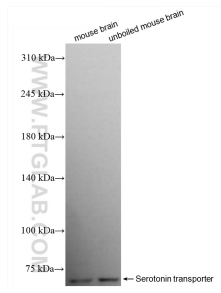
T: 4006900926

E: Proteintech-CN@ptglab.com

W: ptgcn.com

This product is exclusively available under Proteintech Group brand and is not available to purchase from any other manufacturer.

Selected Validation Data



Various lysates were subjected to SDS PAGE followed by western blot with 84844-3-RR (Serotonin transporter antibody) at dilution of 1:3000 incubated at room temperature for 1.5 hours.