

For Research Use Only

MICA Recombinant antibody

Catalog Number: 84850-5-RR



Basic Information

Catalog Number:

84850-5-RR

Size:

1000 μ g/ml

Source:

Rabbit

Isotype:

IgG

GenBank Accession Number:

BC016929

GeneID (NCBI):

100507436

UNIPROT ID:

Q29983

Full Name:

MHC class I polypeptide-related sequence A

Calculated MW:

383 aa, 43 kDa

Observed MW:

58 kDa

Purification Method:

Protein A purification

CloneNo.:

242004C2

Recommended Dilutions:

WB 1:1000-1:8000

Applications

Tested Applications:

WB, ELISA

Species Specificity:

human

Positive Controls:

WB : HeLa cells,

Background Information

Human MHC class I chain-related genes located within the HLA class I region of chromosome 6 encode MHC class I chain-related A and B (MICA and MICB) (PMID: 11429322). MICA and MICB are stress-inducible surface molecules that are not associated with β 2-microglobulin and do not present peptides (PMID: 9497295). They are expressed in intestinal epithelium and many epithelial tumors (PMID: 10359807). MICA and MICB are ligands for NKG2D which is an activating receptor that is expressed on most natural killer (NK) cells, CD8 α β T cells, and γ δ T cells (PMID: 10426993, 11491531).

Storage

Storage:

Store at -20°C. Stable for one year after shipment.

Storage Buffer:

PBS with 0.02% sodium azide and 50% glycerol pH 7.3.

Aliquoting is unnecessary for -20°C storage

For technical support and original validation data for this product please contact:

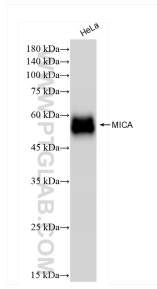
T: 4006900926

E: Proteintech-CN@ptglab.com

W: ptgcn.com

This product is exclusively available under Proteintech Group brand and is not available to purchase from any other manufacturer.

Selected Validation Data



HeLa cells were subjected to SDS PAGE followed by western blot with 84850-5-RR (MICA antibody) at dilution of 1:4000 incubated at room temperature for 1.5 hours.