

For Research Use Only

Complement factor D Recombinant antibody, PBS Only (Detector)

Catalog Number: 84851-4-PBS



Basic Information

Catalog Number: 84851-4-PBS	GenBank Accession Number: NM_001928.3	Purification Method: Protein A purification
Size: 1 mg/ml	GeneID (NCBI): 1675	CloneNo.: 242244C2
Source: Rabbit	UNIPROT ID: P00746	
Isotype: IgG	Full Name: complement factor D (adipsin)	
	Calculated MW: 27kDa	
	Observed MW: 27 kDa	

Applications

Tested Applications:
WB, IHC, Sandwich ELISA, Indirect ELISA, Sample test

Species Specificity:
human, mouse

Background Information

Complement factor D, also known as adipsin, is a highly specific serine protease. Complement factor D is the rate-limiting enzyme in the alternative pathway of complement. It activates C3 convertase by cleaving factor B, which is a key step in the alternative pathway. Complement factor D catalyzes the cleavage of factor B to generate Ba (non-catalytic chain) and Bb (active catalytic subunit), which together with C3(H2O) (or C3b) constitute the active C3 convertase C3(H2O)Bb (or C3bBb). (PMID: 34566967; PMID: 27775713).

Storage

Storage:
Store at -80°C.
The product is shipped with ice packs. Upon receipt, store it immediately at -80°C

Storage Buffer:
PBS Only

For technical support and original validation data for this product please contact:

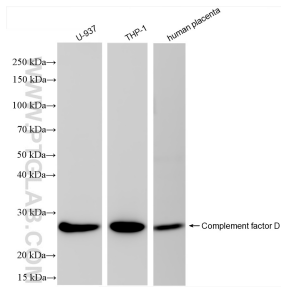
T: 4006900926

E: Proteintech-CN@ptglab.com

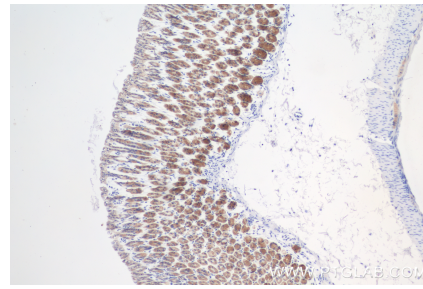
W: ptgcn.com

This product is exclusively available under Proteintech Group brand and is not available to purchase from any other manufacturer.

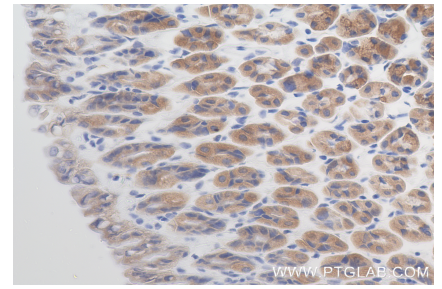
Selected Validation Data



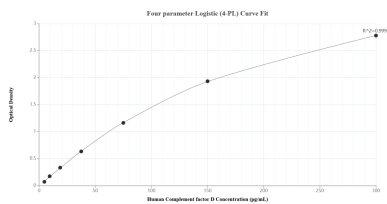
Various lysates were subjected to SDS PAGE followed by western blot with 84851-4-RR (Complement factor D antibody) at dilution of 1:8000 incubated at room temperature for 1.5 hours. This data was developed using the same antibody clone with 84851-4-PBS in a different storage buffer formulation.



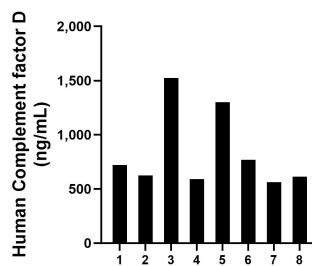
Immunohistochemical analysis of paraffin-embedded mouse stomach tissue slide using 84851-4-RR (Complement factor D antibody) at dilution of 1:800 (under 10x lens). Heat mediated antigen retrieval with Tris-EDTA buffer (pH 9.0). This data was developed using the same antibody clone with 84851-4-PBS in a different storage buffer formulation.



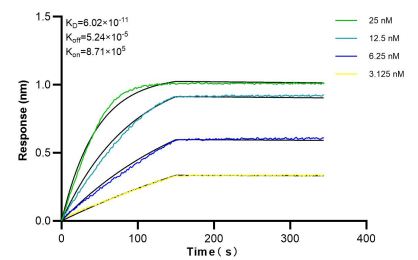
Immunohistochemical analysis of paraffin-embedded mouse stomach tissue slide using 84851-4-RR (Complement factor D antibody) at dilution of 1:800 (under 40x lens). Heat mediated antigen retrieval with Tris-EDTA buffer (pH 9.0). This data was developed using the same antibody clone with 84851-4-PBS in a different storage buffer formulation.



Sandwich ELISA standard curve of MP01660-3, Human Complement factor D Recombinant Matched Antibody Pair - PBS only. 84851-2-PBS was coated to a plate as the capture antibody and incubated with serial dilutions of standard Eg1189. 84851-4-PBS was HRP conjugated as the detection antibody. Range: 4.69-300 pg/mL



Serum of eight individual healthy human donors was measured. The Complement factor D concentration of detected samples was determined to be 838.5 ng/mL with a range of 561.9-1525.4 ng/mL



Bi-layer interferometry (BLI) kinetic assays of 84851-4-RR against Human Complement factor D were performed. The affinity constant is 60.2 pM.