

For Research Use Only

# CENPF Recombinant antibody, PBS Only

Catalog Number: 84865-4-PBS



## Basic Information

<b>Catalog Number:</b> 84865-4-PBS	<b>GenBank Accession Number:</b> NM_016343	<b>Purification Method:</b> Protein A purification
<b>Size:</b> 1 mg/ml	<b>GeneID (NCBI):</b> 1063	<b>CloneNo.:</b> 242277G9
<b>Source:</b> Rabbit	<b>UNIPROT ID:</b> P49454	
<b>Isotype:</b> IgG	<b>Full Name:</b> centromere protein F, 350/400ka (mitosin)	
<b>Immunogen Catalog Number:</b> AG29665	<b>Calculated MW:</b> 368 kDa	

## Applications

**Tested Applications:**  
IF/ICC, Indirect ELISA

**Species Specificity:**  
human

## Background Information

CENPF, also named as mitosin and centromere protein F (PMID: 22912832), belongs to centromere protein F family. During the cell cycle, CENPF localizes in multiple cellular structures including the nuclear envelope in late G2/early prophase and kinetochores throughout mitosis (PMID: 30198378). CENPF is required for kinetochore function and chromosome segregation in mitosis and required for kinetochore localization of dynein, LIS1, NDE1 and NDEL1 (PMID: 17600710)(PMID: 7542657). It regulates recycling of the plasma membrane by acting as a link between recycling vesicles and the microtubule network through its association with STX4 and SNAP25. Acts as a potential inhibitor of pocket protein-mediated cellular processes during development by regulating the activity of RB proteins during cell division and proliferation (PMID: 26125848). The calculated molecular weight of CENPF is ~358 kDa and CENPF can be detected as ~367 kDa (PMID: 7542657).

## Storage

**Storage:**  
Store at -80°C.  
**The product is shipped with ice packs. Upon receipt, store it immediately at -80°C**

**Storage Buffer:**  
PBS Only

For technical support and original validation data for this product please contact:

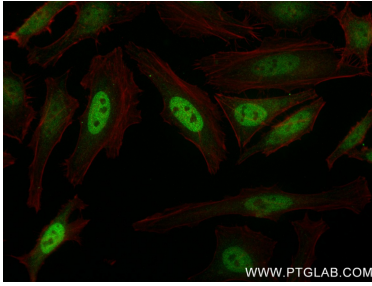
T: 4006900926

E: Proteintech-CN@ptglab.com

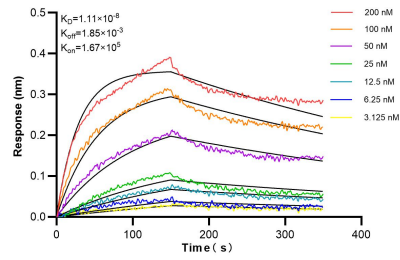
W: ptgcn.com

**This product is exclusively available under Proteintech Group brand and is not available to purchase from any other manufacturer.**

## Selected Validation Data



Immunofluorescent analysis of (4% PFA) fixed HeLa cells using CENPF antibody (84865-4-RR, Clone: 242277G9) at dilution of 1:500 and CoraLite®488-Conjugated Goat Anti-Rabbit IgG(H+L) (SA00013-2), CL594-Phalloidin (red). This data was developed using the same antibody clone with 84865-4-PBS in a different storage buffer formulation.



Biolayer interferometry (BLI) kinetic assays of 84865-4-RR against Human CENPF were performed. The affinity constant is 11.1 nM.