

For Research Use Only

WAPL Recombinant antibody, PBS Only (Capture)

Catalog Number: 84877-1-PBS



Basic Information

Catalog Number: 84877-1-PBS	GenBank Accession Number: BC017393	Purification Method: Protein A purification
Size: 1 mg/ml	GeneID (NCBI): 23063	CloneNo.: 242443D5
Source: Rabbit	UNIPROT ID: Q7Z5K2	
Isotype: IgG	Full Name: wings apart-like homolog (Drosophila)	
Immunogen Catalog Number: AG9585	Calculated MW: 142 kDa	

Applications

Tested Applications:
Cytometric bead array, Sandwich ELISA, Indirect ELISA,
Sample test

Species Specificity:
human

Background Information

Storage

Storage:
Store at -80°C.
The product is shipped with ice packs. Upon receipt, store it immediately at -80°C

Storage Buffer:
PBS Only

For technical support and original validation data for this product please contact:

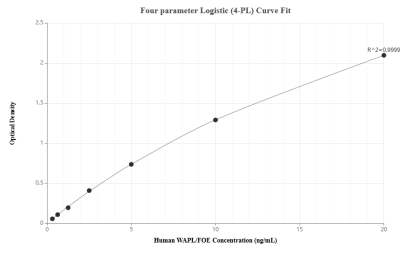
T: 4006900926

E: Proteintech-CN@ptglab.com

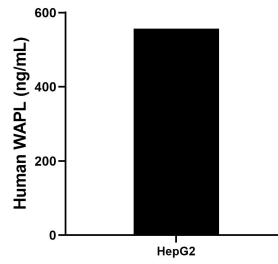
W: ptgcn.com

This product is exclusively available under Proteintech Group brand and is not available to purchase from any other manufacturer.

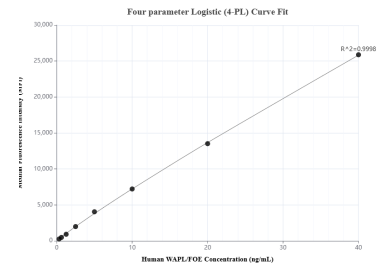
Selected Validation Data



Sandwich ELISA standard curve of MP01615-1, Human WAPL Recombinant Matched Antibody Pair - PBS only. 84877-1-PBS was coated to a plate as the capture antibody and incubated with serial dilutions of standard Ag9585. 84877-2-PBS was HRP conjugated as the detection antibody. Range: 0.313-20 ng/mL



The mean WAPL concentration was determined to be 556.41 ng/mL in HepG2 cell extract based on a 1.0 mg/mL extract load.



Cytometric bead array standard curve of MP01615-1, WAPL Recombinant Matched Antibody Pair, PBS Only. Capture antibody: 84877-1-PBS. Detection antibody: 84877-2-PBS. Standard: Ag9585. Range: 0.313-40 ng/mL