

For Research Use Only

WAPL Recombinant antibody

Catalog Number: 84877-5-RR



Basic Information

Catalog Number: 84877-5-RR	GenBank Accession Number: BC017393	Purification Method: Protein A purification
Size: 1000 µg/ml	GeneID (NCBI): 23063	CloneNo.: 242443C1
Source: Rabbit	UNIPROT ID: Q7Z5K2	Recommended Dilutions: WB 1:5000-1:50000 IHC 1:250-1:1000 IF/ICC 1:200-1:800
Isotype: IgG	Full Name: wings apart-like homolog (Drosophila)	
Immunogen Catalog Number: AG9585	Calculated MW: 142 kDa	
	Observed MW: 160-180 kDa	

Applications

Tested Applications:
WB, IHC, IF/ICC, ELISA

Species Specificity:
human, mouse

Note-IHC: suggested antigen retrieval with TE buffer pH 9.0; (*) Alternatively, antigen retrieval may be performed with citrate buffer pH 6.0

Positive Controls:

WB: U2OS cells, MCF-7 cells, K-562 cells, HepG2 cells, HeLa cells, HEK-293 cells

IHC: mouse skeletal muscle tissue,

IF/ICC: HepG2 cells,

Background Information

The wings apart-like (WAPL, or WAPAL) protein was originally identified as a gene product that potentially regulates heterochromatin organization in *Drosophila melanogaster*. Human WAPL is a cohesin-binding protein that promotes sister-chromatid resolution in mitotic prophase. Overexpression of WAPL disturbs mitosis and cytokinesis, and contributes to tumor progression by induction of chromosomal instability. WAPAL has a predicted molecular weight of 140 kDa, however, as a result of its extensive phosphorylation it separates on a SDS gel as a band of approximately 160-180 kDa.

Storage

Storage:

Store at -20°C. Stable for one year after shipment.

Storage Buffer:

PBS with 0.02% sodium azide and 50% glycerol pH 7.3.

Aliquoting is unnecessary for -20°C storage

For technical support and original validation data for this product please contact:

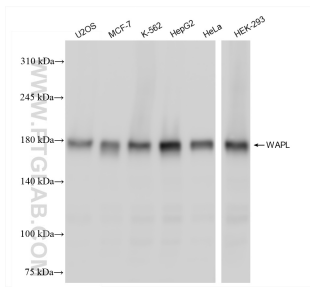
T: 4006900926

E: Proteintech-CN@ptglab.com

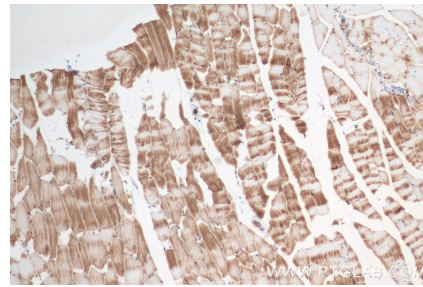
W: ptgcn.com

This product is exclusively available under Proteintech Group brand and is not available to purchase from any other manufacturer.

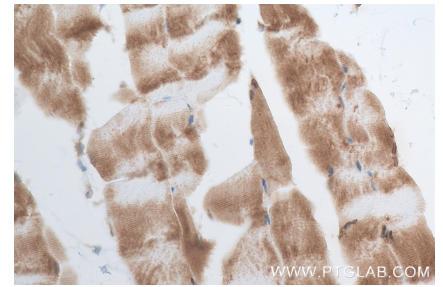
Selected Validation Data



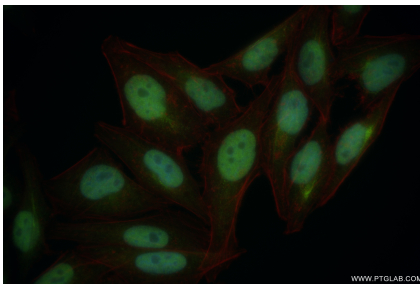
Various lysates were subjected to SDS PAGE followed by western blot with 84877-5-RR (WAPL antibody) at dilution of 1:20000 incubated at room temperature for 1.5 hours.



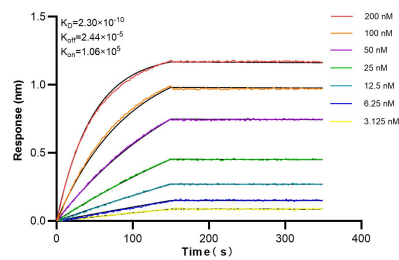
Immunohistochemical analysis of paraffin-embedded mouse skeletal muscle tissue slide using 84877-5-RR (WAPL antibody) at dilution of 1:500 (under 10x lens). Heat mediated antigen retrieval with Tris-EDTA buffer (pH 9.0).



Immunohistochemical analysis of paraffin-embedded mouse skeletal muscle tissue slide using 84877-5-RR (WAPL antibody) at dilution of 1:500 (under 40x lens). Heat mediated antigen retrieval with Tris-EDTA buffer (pH 9.0).



Immunofluorescent analysis of (4% PFA) fixed HepG2 cells using WAPL antibody (84877-5-RR, Clone: 242443C1) at dilution of 1:400 and CoraLite@488-Conjugated Goat Anti-Rabbit IgG(H+L) (SA00013-2), CL594-Phalloidin (red).



Biolayer interferometry (BLI) kinetic assays of 84877-5-RR against Human WAPL were performed. The affinity constant is 0.23 nM.